



REPUBLIC OF KENYA

COUNTY GOVERNMENT OF NYAMIRA

**DEPARTMENT OF TRANSPORT, ROADS AND PUBLIC
WORKS**

First Strategic Plan

2013-2017

2013

i

TABLE OF CONTENT

ACRONYMS AND ABBREVIATIONS	IV
FORWARD	V
EXECUTIVE SUMMARY	VII
CHAPTER ONE	1
1.0 BACKGROUND INFORMATION	1
1.1 INTRODUCTION	1
1.2 MAJOR DEVELOPMENT CHALLENGES	2
1.3 DEVELOPMENT AGENDA	2
1.4 RESOURCE CONTRIBUTION TO THE ECONOMY	3
1.5 ROLES FUNCTIONS AND MANDATE	3
1.6 LESSONS LEARNED IN THE PREVIOUS PLANS	4
CHAPTER TWO	5
2.0 SITUATIONAL ANALYSIS.....	5
2.1 INTRODUCTION	5
THE DEPARTMENT IS DIVIDED INTO THREE DIVISIONS, VIZ;	5
2.2 STRENGTHS, WEAKNESS, OPPORTUNITIES AND THREATS (SWOT) ANALYSIS	6
2.3 POLITICAL, ECONOMIC, SOCIO-CULTURAL, TECHNOLOGICAL, ECOLOGICAL AND LEGAL (PESTEL) ANALYSIS.....	7
2.4 RISK ANALYSIS.....	8
2.5 DEPARTMENT PROFILE	9
2.6 AN ANALYSIS OF THE CURRENT ORGANIZATION STRUCTURE AND FUNCTIONS.....	10
2.7 MINISTERIAL CURRENT STAFF ESTABLISHMENT	11
2.7 STAKE HOLDER’S ANALYSIS	12
2.8 PERFORMANCE ACHIEVEMENT OF THE SECTOR	14
2.9 ONGOING PROGRAMMES AND PROJECTS PRIORITIES.....	15
2.9.1. Roads sub sector:	15
I) ON-GOING PROJECTS-	15
II) STALLED/TERMINATED PROJECTS/PROGRAMMES.....	16
III) NEW ROADS PROJECT PROPOSALS (CONSTRUCTION, REHABILITATION AND MAINTENANCE).....	16
2.9.2 Public Works sub-sector:.....	53
I) ON-GOING PROJECTS/PROGRAMMES.....	53
II) STALLED/TERMINATED PROJECTS/PROGRAMMES.....	55
III) NEW PROJECT/PROGRAMME PROPOSALS.	56
CHAPTER THREE	65
3.0 STRATEGIC MODEL.....	65
3.1 INTRODUCTION	65
3.2 MANDATE	65
3.3 VISION	65
3.4 MISSION STATEMENT	65
3.5 CORE VALUES	65
3.6 STRATEGIC GOALS.....	66
3.4 STRATEGIC OBJECTIVES	66

3.5 CROSS CUTTING ISSUES	67
3.4 STRATEGIC INDICATORS AND LOGICAL FORMWORK	68
CHAPTER FOUR : IMPLEMENTATION OF THE STRATEGIC PLAN	72
4.1 INTRODUCTION	72
4.2 STRATEGIC IMPLEMENTATION MATRIX	73
4.3 FINANCIAL RESOURCE MOBILIZATION	77
4.4 HUMAN RESOURCES	78
4.6 IMPLEMENTATION STRATEGY	80
4.6.1 EXECUTIVE COMMITTEE MEMBER	81
4.6.2 COUNTY DEPARTMENTAL CHIEF OFFICER	81
4.6.3 COUNTY DIRECTOR TRANSPORT	82
4.6.4 COUNTY DIRECTOR OF ROADS AND ENGINEERING SERVICES	82
4.6.5 THE COUNTY DIRECTOR OF ARCHITECTURE AND PUBLIC WORKS	82
4.6.6 SUPPORT SERVICES UNIT	83
4.7 PROPOSED DEPARTMENTAL ORGANOGRAM	84
CHAPTER FIVE: MONITORING, EVALUATION AND REPORTING	85
5.1 MONITORING & EVALUATION FRAMEWORK.....	85

ACRONYMS AND ABBREVIATIONS

KeRRA: Kenya Rural Roads Authority

KTDA: Kenya Tea Development Authority

AIDS: Acquired Immune Deficiency Syndrome

PPP: Public Private Partnership

NEMA: National Environmental Management Authority

EIA: Environmental Management Authority

CDF: Community Development Fund

JICA: Japanese International Cooperation Agency

CO: Chief Officer

ECM: Executive Committee Member

ERBK: Engineering Registration Board of Kenya

IEK: Institution of Engineers of Kenya

AAK: Architectural Association of Kenya

IQSK: Institution of Quantity Surveyors of Kenya

IPMK: Institution of project Managers of Kenya

KURA: Kenya Urban Roads Authority

KeNHA: Kenya National Highway Authority

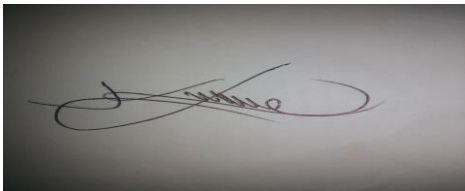
ME: Monitoring and Evaluation

LAs: Local Authorities

FORWARD

The Transport, Roads and Public Works Department is among the Departments whose functions are assigned to the County Government in Schedule Four of the Constitution of Kenya, 2010. The Department of Transport, Roads and Public Works of Nyamira County has developed a strategic plan which covers the next five years (2013-2017). This task was undertaken out of the deliberate need to be driven toward excellence of performance. Our strategic plan will develop a shared vision of where we want to go during the next five years and create a common understanding for the public and other stakeholders on reason of existence for the Department of Transport, Roads and Public Works in Nyamira County. We also realize that our department works in an open system. Thus, our strategic plan recognizes how we affect and also get affected by other sub-systems; at the county, national and global levels. However, this does not mean losing sight to operational efficiency.

With this new orientation we need to develop a strategic direction geared toward efficient and effective service delivery. This will require working strategies, leadership commitment, a committed staffing and support from stakeholders. It is my belief that this strategic planning process will inform our operational philosophy and help our department be in track all the time, and allow it to respond adaptively to change while remaining faithful to our mission and vision.

A rectangular box containing a handwritten signature in black ink. The signature is stylized and appears to read 'K.K. Osoro'.

Arch. K.K Osoro

Executive committee member

ACKNOWLEDGEMENT.

The process of strategic plan making is a consultative and participatory that consumes both financial and other resources. It involves long hours of projecting and brainstorming in order to be focused and have a strategic direction.

The department appreciates and acknowledges all the participants who sacrificed their time to deliver this strategic plan. We underscore the efforts of the following among others who tirelessly ensured that this exercise was a success;

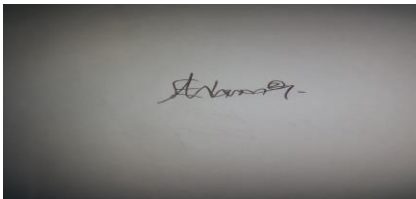
The Executive committee member Transport, Roads and Public works Arch Kepha Osoro for the wise counsel and direction in shaping up our strategic thinking.

Dr. Vincent Machuki and your consultancy team for the strategic direction you gave us in coming up with this strategic plan.

We cannot list all by duty or contribution but we appreciate the commendable job done by;

- 1) Paul Onyango
- 2) Arch. Gerald Namwamba
- 3) QS. Elijah Oteko
- 4) Elvin Oeri
- 5) Joseph Momanyi
- 6) Eng Hezron Mokuu
- 7) Zipporah Nyobayo
- 8) Daniel Omwansa
- 9) Caleb Nyakundi

We salute you.

A rectangular box containing a handwritten signature in black ink, which appears to be 'E.M. Mokuu'.

E.M. Mokuu

Chief Officer

EXECUTIVE SUMMARY

Strategic planning process keeps an organization on track all the time, and allows it to respond adaptively to change. In recognizing this Department of Transport, Roads and Public Works of Nyamira County have developed a strategic plan which covers the next five years (2013-2017). It envisions “a county with reliable transport system and state of the art public works for improved quality of life”. This will be realized by providing efficient and high quality transport system, roads infrastructure and public works through environmental friendly and cost-effective construction, maintenance and management for socio-economic development.

In delivering services to citizens the Department of Transport, Roads and Public Works of Nyamira County will be guided by Customer focus, creativity and innovativeness, professionalism and timeliness, partnership, transparency and accountability, team spirit and integrity as its core values. Overly, this will require working strategies, leadership commitment, a committed staffing and support from stakeholders.

Under the leadership of Executive Committee Member and Departmental Chief Officer the Department of Transport, Roads and Public Works have three Directorates each with distinguishable constitutional functions. Transport Directorate oversees erection, road furniture, creation of airstrips and bus bays, maintaining/improving transport systems, licensing, creation of transport policies and liaising with other players to enforce transport policies regulations. On the other hand Roads Directorate is charged with planning constructing and maintaining structures (box culverts, bridges and bus parks), opening new roads, maintaining existing ones and upgrading rural roads. For the public Works Directorate it is responsible for facilitating provision and maintenance of buildings and other public works within the County. The department has a well designed organizational structure with clear functions and reporting lines.

To respond effectively to citizen service needs the Department of Transport, Roads and Public Works of Nyamira County has identified strategic areas to pursue in the period 2013-2017. It will strive to enhance quality of motorable, all weather roads and increase the coverage of paved roads across the county and also open up new access roads. In transport area it will continuously improve and maintain safety of all transport systems across the county as well as acquire modern equipment and machinery for construction and maintenance. Increasing stock of government offices and refurbish existing public works, and continuous improvement and modernization of public works facilities is also one of its strategic goals. To address institutional capacity challenges the Department is keen at bolstering its staff capacity and establishing a complete and well equipped office unit.

CHAPTER ONE

1.0 BACKGROUND INFORMATION

1.1 Introduction

The Department has undergone a major restructuring exercise which seeks to refocus it away from an institution that places strong emphasis on policy as the expense of implementation to one that places emphasis to implementation co-ordination. While the Department's mandate traverses functions of concurrent competency in the county, it has an obligation to play a leadership role and determine the implementation framework, standards and guidelines where a need to cohesion and alignment at national level is required.

The outcomes approach to service delivery requires seamless integration in the delivery chain. Such integration takes the form of vertical integration (across spheres of government) and horizontal alignment (across department sectors). To achieve this, government will conceptualize as single delivery agenda for Transport, Roads and Public works which incorporates the strategic focus areas for all spheres of government underpinned by a single set of delivery targets. Delivery on this agenda will be formalized through a Service Delivery Agreement between the Executive Committee Member, the Chief Officer and the heads of sectors responsible for transport, roads and infrastructure functions and sub counties. The implementation of the Service Delivery Agreement will be driven through Implementation Forums and progress measured quarterly.

Public entities area critical pillar in the Department's delivery chain and effective oversight over these is a necessary ingredient in improving service delivery and maximizing impact on the ground. There structuring has ushered in a new over sight model for the Department's public entities which seeks to give impetus to the horizontal alignment of the department's delivery agenda. Functional oversight of public entities will now reside with the line functions, and these will be held accountable to ensure that these entities deliver on their mandates and that they function optimally and make the required impact in their respective environments.

The revised organizational design of the Department came into effect on April 2013 and re-aligns the Department along three core directorate, these being:

Transport Directorate

This branch is responsible for ensuring that all functional areas and spheres of government undertake transport planning in a seamlessly integrated way underpinned by core principles articulated in the County Strategic Planning Framework to guide all transport planning effort in the county.

Road Directorate

This branch is responsible for road infrastructure development and maintenance, road traffic regulation and safety, industry development as well as road engineering and related standards.

Public works Directorate

The public Works Directorate facilitates provision and maintenance of buildings and other public works within the County. It also oversees development of designs for public buildings, preparation of bill of quantities for building projects and other public works. The Directorate provides project and contract management services to public building projects.

1.2 Major development challenges

- Increasing levels of car ownership and traffic, especially in the central area;
- High levels of truck traffic on some roads, especially large multi-axle vehicles carrying shipping containers;
- Lack of an effective and connected road hierarchy in urban area, which results in heavy trucks using narrow residential streets;
- Lack of footpaths on most roads and generally poor facilities for pedestrians;
- Many roads are vulnerable to natural hazards (rain season) and become impassable, cutting off access to villages during periods of severe weather/natural disaster.
- Climate change and disaster management initiatives;
- Government response to major developments (factories/resorts) and major construction projects, that have multi-sector infrastructure implications;
- Maintenance and asset management;
- Infrastructure planning and project evaluation.
- Keep pace with growth in demand for infrastructure services. There is strong growth in demand for infrastructure services in County driven by a range of factors, such as population trends and economic activity;
- Address a range of specific issues and deficiencies with existing infrastructure so that the infrastructure system functions more effectively; and
- Improve the coverage, quality and reliability of economic infrastructure. As well as ensuring access to basic services, there are growing community expectations regarding the quality of the services provided

1.3 Development agenda

- i. **An efficient and integrated transport & infrastructure for social and economic development**

The Department will ensure the maintenance and strategic expansion of buildings, the road network, and support the development of road network system in rural and urban areas.

- ii. **A transport & infrastructure sector that is safe and secure.**

The Department will implement various policy interventions that seek to reduce the number of incidents in the road and construction environment.

- iii. **Improved rural access, infrastructure and mobility**

The Department will improve rural access by assisting in developing road asset management systems, which will assist in the implementation of the Road Infrastructure Strategic Framework of Nyamira County.

iv. Improved public transport systems

Public transport is a critical strategic imperative in the Department's service delivery agenda. Over the medium term, the Department will implement measures to ensure an effective, efficient, affordable and accessible public transport system in both urban and rural areas through, among others, the implementation of integrated public transport networks, and establishment and strengthening of regulatory entities, opening new rural roads, and development and upgrading of existing road corridors.

v. Increased contribution to job creation

The Department will prioritize job creation through the implementation of labour based projects.

vi. Increased contribution of transport to environmental sustainability

The Department will implement measures aimed at reducing the impact of transport on climate change by supporting more passenger transport and construction of new walk ways in major town centres.

1.4 Resource contribution to the economy

The Department is responsible for policy and planning, project management and design, strategic operational management, and corporate administrative services. The county offices throughout the county provide construction, maintenance and operational services while the roads sector provides emergency roads works maintenance.

The Public works Directorate provides consultancy services to all county departments in designs for public buildings, preparation of bill of quantities for building projects and other public works. It has representatives assigned in each sub county who supervises projects which are under construction and any new upcoming projects.

1.5 Roles functions and mandate

The mandate of the Department of Transportation and Works includes responsibly for the administration, supervision, control, regulation, management and direction of all matters relating transportation and public works, including:

- Design, construction, improvement, repair and maintenance of highways, local roads, airstrips and related facilities;
- Property that belongs to or is held or occupied by the county, and the works and properties acquired, constructed, extended, enlarged, repaired or improved at the expense of the county, or for the acquisition, construction, extension, enlargement, repair or improvement of which public funds are voted and appropriated by the Legislature, other than property and works assigned to another minister or department of the government of the county;

- Property management including the design, construction, repair, maintenance, heating, lighting, cleaning, and security of buildings that belong to or are held or occupied by the county and grounds that belong to those buildings;
- The leasing of real property by the county and related activities;
- The disposition of surplus real property; and,
- The administration of Acts under the responsibility of the Department and of all orders and regulations passed or made under those Acts, including those powers, functions or duties necessary or desirable for carrying out the purpose of those Acts.

1.6 Lessons learned in the previous plans

This section offers an assessment of the lessons learnt during the implementation of the previous Strategic plan that were developed by ministry of local government. The development of Annual Work Plans, Procurement Plans and monitoring of the same helped the county to achieve its targets. Through the reform initiatives in the Ministry, various tools for use by the LAs in improving service delivery as well as improving financial administration and management have been developed.

Targeted capacity building based on the needs of both the Departmental staff and the Directorates have yielded dividends in the form of improved performance.

The following are the lessons learnt from the implementation of the first Strategic Plan and recommendations derived from those lessons:

i. Need for timely development of implementation schedules:

There is need to develop implementation plans for the Strategic Plan. This was not adequately addressed in the previous plans. The Strategic Plan should be the basis for annual planning and budgeting. The annual targets set in the strategic Plan should be consistently refined to make the budget estimates as realistic as possible. Annual work plans are an important management tool and should be developed through a participatory process.

ii. Importance of leadership in implementing the strategic plan:

Leadership for implementing the current strategic plan was vested in the Central Planning Unit which lacked capacity to direct and co-ordinate implementation. Consequently, the Ministry failed to establish and institutionalize an effective reporting mechanism. In order to ensure effectiveness and efficiency, the Chief Officer will direct and co-ordinate implementation of this Strategic Plan.

iii. Need to ensure adequate capacity to implement strategic plans:

Implementation of the current strategic plan requires team spirit. Subsequently, the current strategic plan advocates for proactive initiatives that will ensure adequate capacity for implementation.

iv. Little harmony between the strategic plan, work plans, performance contracts and

Budgetary provisions:

In implementing the first strategic plan, there was little harmony between the Strategic Plan, Local Government Reform Strategy, work plans, performance contracts and budgetary provisions. This reduced efficiency and effectiveness of strategy implementation. To this end, efforts aimed at linking the annual work plans, performance contracts and budgetary provisions to this strategic plan will be made.

CHAPTER TWO

2.0 SITUATIONAL ANALYSIS

2.1 Introduction.

The department is divided into three divisions, viz;

- a) Roads
- b) Transport
- c) Public works

a) Roads

Nyamira county has a total road network of 1,117 km of classified roads distributed across the four constituencies as follows:-

Constituency	Road Network (Km)
North Mugirango	170
Borabu	304
West Mugirango	277
Kitutu Masaba	278
ABC	105
Total	1,117

The above network excludes unclassified roads opened recently through Constituency Development Fund formerly under Local Authorities and those opened by KeRRA. These road networks are composed of earth or gravel roads except for road E199 (C21) Konate- (A1) Kadongo, D221/D220 (E199) Motobo – (C21) Nyabioto and (E208) Miruka – Daraja Mbili which have been to build to bitumen standards. The general condition of road network in the County is considered fair. However, sections of Borabu Constituency are poor owing to the black cotton soil. The road network within urban centres is not well developed. A lot of our roads have been encroached upon by people carrying out economic activities.

b) Transport:

The mode of transport in Nyamira County is largely vehicular with most vehicles having passenger capacity of 14 and five. Use of motor vehicles is increasingly in use across the County though poorly regulated. In recent past there has been an increasing uptake of registration in Saccos among transport players. Along Kisii-Chemosit and Konate-Kadongo roads there are no bus bays (passenger drop and pick points). Similarly there no pedestrian walk ways in major town centers. Road furniture (signage are marking) are inadequate across the County. Among sector players there exists a cordial relationship though more facilitation is required to enhance

enforcement of transport regulations. The citizens need to be proactive in protecting road drainage and other road services.

c) Public Works:

Currently the county has inadequate public works facilities such as office buildings, furniture, equipment machineries and toilets among others. Existing office buildings require more maintenance to bring them in order. There is also demand for modern design of public facilities that are spacious and environmental friendly. The state of institutional facilities (health, educational, markets etc) is bad and there is need for further development of these. There's a total lack of certain civic facilities eg stadia, social/public halls and these need to be planned and developed.

2.2 Strengths, Weakness, Opportunities and Threats (SWOT) Analysis

Strengths

- i. The ministry prides in an experienced and committed staffing
- ii. Goodwill from the county government and development partners
- iii. Strong capacity in designing, preparing bill of quantities and supervision of various projects

Weakness

- i. Inadequate staff capacity which needs to be enhanced in terms of number and professional development
- ii. The department is constrained in regards to machinery and equipment to effectively carry out its mandate
- iii. Slow pace of integrating former departmental units into the county governance structures
- iv. Inadequate road management and control systems (axle road) in rural roads

Opportunities

- i. Existence of enabling national legal framework on devolution
- ii. Goodwill from the county government and development partners
- iii. Easy access of raw materials like sand, stones and murram
- iv. Availability of cheap unskilled labor
- v. Access to training opportunities from Kenya Institute of highways and building technology (KIHBT) in the region
- vi. Access of credit guarantee from national government to purchase machinery and equipment
- vii. High potential of Public Private Partnerships (PPP) e.g. KTDA and Other tea production multinationals in the county

Threats

- i. Unfavorable rainfall rains patterns (heavy down pour and floods) posing challenge to roads maintenance
- ii. Tendency of encroachment to road reserves by public
- iii. Delays in resolving disputes, property titles and political issues hindering long term investments
- iv. Resistance by the national government to operationally devolve county roads to the county government as well as related road construction equipments.
- v. Attempts by the National Government to formulate Road laws that negate the constitutional assignment of County Roads to Counties.

2.3 Political, Economic, Socio-cultural, Technological, Ecological and Legal (PESTEL) Analysis

a) Political Factors

Key players in political space are member of the senate, members of the national assembly, and members of county assembly, youth and women groups. The senate plays an oversight role in resource allocation and utilization; members of national assembly control CDF funds while the members of county assembly prioritize infrastructure projects and approve budget allocations of various projects in the county. On the other hand youth/women groups are keen on implementation of affirmative policies.

So far these political players have been supportive to department of Transport, Roads and Public Works by allocating substantial finance to create and develop public facilities and roads. However, there is need to improve relationship with national government to realize real devolution.

b) Economic Factors

The tea industry (KTDA and Multinational Companies) have assisted in maintaining roads through constructing foot bridges, patching and graveling rural roads. On the flip side, encroachment of road reserves by agricultural activities poses a great challenge in expansion and construction of rural roads.

c) Socio-cultural Factors

There are emerging retrogressive attitudes towards roads and other infrastructural usage such as misuse of designated pedestrian walks and resistance for culverts infrastructure. Road safety is also compromised by few drivers/touts with a tendency of consuming alcohol during working hours. Corruption also affects procurement processess and compromises supervision and quality of infrastructure.

d) Technological Factors

Advancement in computer aided design software (ArchiCAD, AutoCAD and Artlantis) will enable our Department to develop modern and cost-effective designs. It is also anticipated that developments in material technology will avail construction options that addresses material quantity and quality aspects.

e) Ecological Factors

The hilly topography of Gusii region and high water table in some areas is a challenge to expansion and maintenance of road infrastructure. Similarly occasional mudslides and harsh weather conditions (floods) destroy existing rural roads in the county.

f) Legal Factors

Public private partnership (PPP) arrangement gives us an opportunity to partner with private players to develop more roads, transport systems and public works. Procurement rules require departments to observe laid out procedures and affirmative policies (30% youth allocation). NEMA requirement for Environmental Impact Assessment (EIA) subjects our projects to thorough scrutiny; projects might be approved or denied a license. Existence of development control rules provides a framework for regulating upcoming developments. At the county level building by-laws will have to be approved by the county assembly.

2.4 Risk Analysis

The preparation of the strategic plan identified issues likely to jeopardize implementation of the Plan. The risks are grouped as strategic, organizational, operational, financial and technological.

- i. Strategic risks may include statutory changes, and lack of support from stakeholders in some of the proposed strategies and activities.
- ii. Organizational risks may include re-organization of the parent Ministry, which may affect the mandate of the department at county level as one of its sector is not full devolved to county especially Transport sector.
- iii. Operational risks may include inadequate staff, limited regional representation and lack of Understanding of operational procedures by either internal or external.
- iv. Financial risks may include inadequate or delayed funding from the Government and Development partners especially projects which are funded by central government.
- v. Technological risks may include slow pace in adoption of ICT in the department's operations.

The measures put in place by the Corporation to ensure identification of risks and mitigation include periodic monitoring of the implementation process to enable detection of risks, recruitment and training of staff, holding of regular meetings with the Ministry, stakeholders and development partners, and acquisition of requisite facilities.

2.5 Department Profile

The Department of Transport, Roads and Public Works has three directorates with clearly defined constitutional functions:

(i) Transport

It is responsible for erecting road furniture, creating airstrips and bus bays, maintaining/improving transport systems, licensing, creation of transport policies and liaising with other players to enforce transport policies regulations.

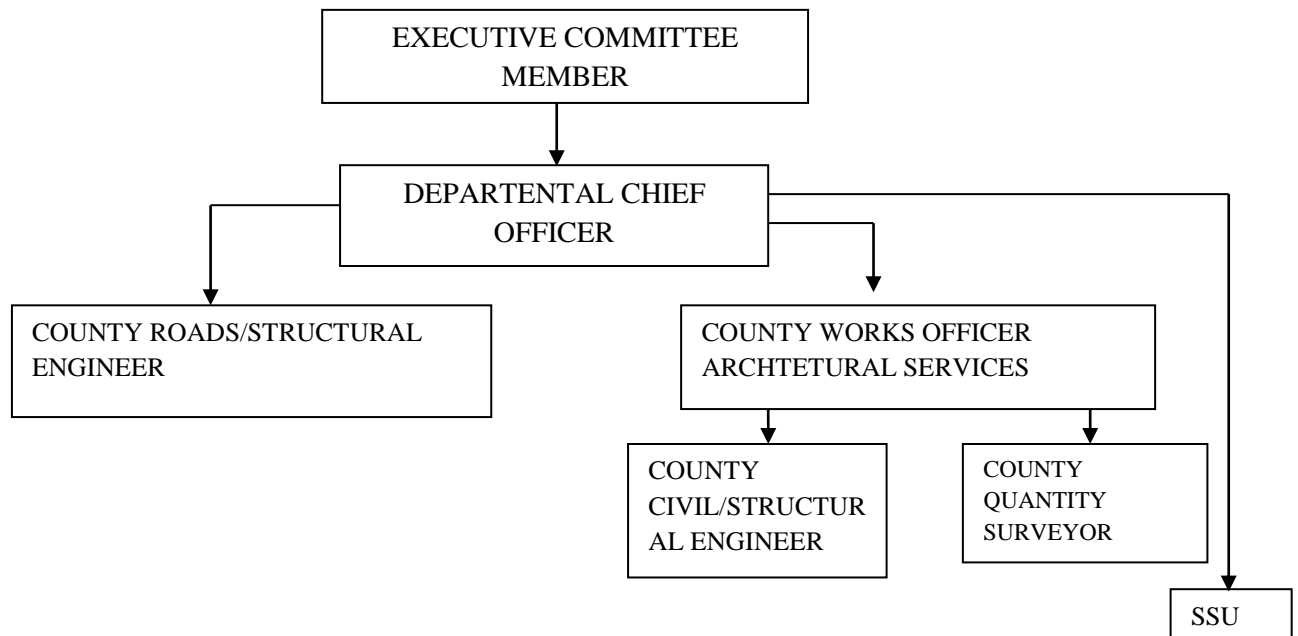
(ii) Roads

The Roads Directorate is charged with planning constructing and maintaining structures (box culverts, bridges and bus parks), opening new roads, maintaining existing ones and upgrading rural roads.

(iii) Public Works

The public Works Directorate facilitates provision and maintenance of buildings and other public works within the County. It also oversees development of designs for public buildings, preparation of bill of quantities for building projects and other public works. The Directorate provides project and contract management services to public building projects.

Current Departmental organization



2.6 An analysis of the current Organization structure and Functions

The functions of the Department are mostly derived from the various acts which supports the devolution framework and the constitution of Kenya 2010. They are currently executed through three sectors namely the transport sector, Roads sector and Public works. The Department has presence in the four sub-counties through its representatives who are coordinating, supervising new and upcoming projects. At the administration levels, the ministry has Executive committee member and the chief officer providing supervisory and co-ordination services.

Executive committee office

The executive committee member represents the Department in the cabinet and is the overall in the Department. The office is responsible for the supervision and overall coordination of the ministry.

Chief Officer.

The chief officer is responsible to the executive committee member for the administration of the department of Transport, Roads and Public Works as provided under section 46. The chief officer is the authorized officer in respect of exercise of delegated power. He or she is the accounting officer of the Department and ensures proper implementation of the strategic plan as well as the annual plans to conform with the requirements of the Kenya vision 2030 and the constitution 2010.

County Works Officer

The county works officer is in charge of architectural services. He facilitates provision and maintenance of buildings and other public works within the County. He also oversees development of designs for public buildings, preparation of bill of quantities for building projects and other public works. The county works officer provides project and contract management services to public building projects.

County Civil/Structural Engineer

The civil engineer is in charge of roads and structure section. He is responsible for design, develop and supervise the construction of safe, economical, durable and functional structures and buildings and their maintenance as well the implementers of the designs. Besides design works, he also undertake feasibility and technical investigations of sites, supervise the tendering procedures and logically resolve design and development problems associated with roads.

County Quantity Surveyor

The Quantity surveyor is Responsible for cost estimates of all county projects, tender document preparation and evaluation, preparation of interim and final payment certificates and preparation of final accounts for completed projects.

Subordinate Staff Unit

They provide supportive services to department at all levels.

2.7 Ministerial Current Staff Establishment

The Department is operating at sub-optimal staffing levels. The total technical and support staff in the department is shown in Table below:

Current staff establishment

Department	Officer	In post
Administration	Executive Committee Member (ECM)	1
	Chief Office(CO)	1
	Secretary	2
	Clerks	2
Public works	County Works Officer	1
	County quantity surveyor (CQS)	1
	County Roads/Structural Engineer	1
	Architectural Assistant	1
	Senior inspector	3
	Snr.CH. Hand	3
	Painter	1
	Fireman	1
	Artisans	2
	Support staff	2
	Driver	2

2.8 Stake holder's analysis

Stakeholder	Function	Competitive advantage	Assistance to the department
County Public service Board	Management of HR	Recruitment of CPS employees	Providing the HRs to HRD
Regulatory bodies e.g ERB,BORQS,IEK,AA K,MIQSK & IPK	Regulate & Register professionals	Regulatory role of professionals in engineering fields	Gives department qualified personnel
NEMA	Managing environment	Conducts environmental Impacts Assessment	Takes cares of environmental impacts of the project before implementation
KeRRA, KURA & KeNHA	Design, supervise and Maintain roads	Have regulatory baking from the central Government	Take care of construction and maintenance of urban, classified and national highways within the county
Salary and remuneration commission	Determination of Remuneration for public officers	Determination of remuneration for state officers/public officers.	Advise on remuneration Guidelines On CPS employees
County Government	Policy formulation & Execution. Coordination of county planning and development activities.	Policy and strategy formulation and implementation. Control of county resources and personnel. Establishment of various committees in the county.	Give direction on implementation of HR strategies and policy. Allocation of financial resources Ensure adequate staff Formulate policies guiding planning process Establish county and sub-county development committees.
County Assembly	Enact legislations	Legislate Receive reports and provide oversight	Provide enabling legislations and policy
National Government Ministry of Transport and infrastructure	National policy and legislations framework on transport and infrastructure	Capacity to formulate transport policies and executing the legislations.	Legislations and policy.
Government training institute	Capacity building for county public	Capacity to Train and develop CPS employees.	County human resources development.

	service employees.		
County departments	Manage HR	Proper linkages to Manage HR issues to the HR department.	Give reports on HRs under them –performance
County Treasury	Financial Record management. Disbursements and tracking of prudent expenditure of government funds	Financial management guidelines, PFM act. Custodians of government funds Accounting capacity	Provide updated financial information. Timely disbursement of funds. Facilitation on field activities for the benefit of the county.
County Assembly	Legislation	Legal mandate/capacity	Legislation of legal framework/ oversight role
Ethics and anti-corruption unit	Promote prudence in public finance management	National mandate and trained personnel	Public awareness and regulatory compliance
Community	Monitoring and evaluation of projects implementation process	Are the main beneficiaries and stakeholders of development initiatives	Help in identification and monitoring implementation of projects Create ownership of projects and thus ensure sustainability.
National government	Policy making Ensuring success of all planning and development endeavors initiated by both national and county governments	Key policy makers in planning and development issues	Legal framework. Giving policy directions at national level to county level Allocation and disbursement of financial resources. Supplementing county government in meeting staffing needs
Media and press	Creation of awareness to the concerned on development issues	Ability to reach majority of people in the county	Cover, highlight, sensitize, report and publish events, Facilitating airing of programs and events
NGOs and donors e.g. ADB	Promotion of public participation and	Financial ability	Funding of development projects

	infrastructural development		Facilitating public forums on development issues Capacity building of the public
Data suppliers	Provision of information/data	Ownership of information	Source of information
County Planning	Coordination and planning.	Coordinating, monitoring and evaluation capacity	Collaboration in field activities such as data collection, analysis and dissemination
Suppliers and Contractors	Delivery of goods and services	Individual capacity and area of specialization.	Provision of goods and services for service delivery.
International community	Foreign investment and donor funding	Financial strength Power of the dollar	Improve financial base for timely implementation of planned programmes.

2.8 Performance achievement of the sector

There are several rural roads that were implemented in all parts of the county. Significant achievements were made in all the parts of the county particularly in employment creation, training and creating economic and social opportunities for vulnerable groups such as women and the youth.

The Development Partners who were active in supporting the implementation of the projects include Sida, KfW, AfD, AfDB, EU and Danida through the Decentralized Agriculture Support Structure (DASS).

2.9 Ongoing Programmes and Projects Priorities

2.9.1. Roads sub sector:

i) On-Going projects-

Project Name/ Location	Objectives	Targets	Description of activities	Project Status
Chabera-Ikonge-Chebilat Rd C22. North Mugirango/Borabu	To Construct this road to bitumen standard	Bituminizing the 40Kms length by 2014	Site Clearance; Earthworks; Stabilized Gravel works; Structures; Bitumen works; Passage of Traffic Road furniture	10% Complete
Kebirigo-Metamaywa Rd D224. Mugirango/Kitutu Masaba	To Construct this road to bitumen standard	Bituminizing the 28Kms length by 2015	Site Clearance; Earthworks; Stabilized Gravel works; Structures; Bitumen works; Passage of Traffic Road furniture	1% Complete
Kemera-Amabuko Rd D223 and Manga-Motemomwamu Rd D221. Kitutu Masaba	To Construct this road to bitumen standard	Bituminizing the 33Kms length by 2015	Site Clearance; Earthworks; Stabilized Gravel works; Structures; Bitumen works; Passage of Traffic Road furniture Site	5% Complete

ii) Stalled/terminated projects/programmes

Project Name/programme Location	Priority ranking.	Objectives	Targets	Description of activities
Tinderet-Rigoko	1	To make the road passable in all weather seasons	New roads construction to gravel standards	bush clearing; Heavy grading with watering and compaction,Culvert Installation and Cleaning,Gravelling,
Metamanywa-Riangombe-Manga	2	To make the road passable in all weather seasons	New roads construction to gravel standards	bush clearing; Heavy grading with watering and compaction,Culvert Installation and Cleaning,Gravelling,
Tonga – omonuri	3	To make the road passable in all weather seasons	New roads construction to gravel standards	bush clearing; Heavy grading with watering and compaction,Culvert Installation and Cleaning,Gravelling,
Kioge - Eronge	4	To make the road passable in all weather seasons	New roads construction to gravel standards	bush clearing; Heavy grading with watering and compaction,Culvert Installation and Cleaning,Gravelling,

iii) New Roads project proposals (Construction, Rehabilitation and Maintenance)

Project Name/programme/location	Location	Objectives	Targets	Description of activities
Kijauri-nyansiongo-manga, nyaronde-	Borabu constituency	To make the road passable in all weather seasons	Specified roads at the stated sites	Bush clearing,Heavy grading with watering and compaction,Culvert Installation and Cleaning, Gravelling,Box Culvert Construction, Removal of illegal

milimani-riabaita Rds				structures
Amakara-nyandoche, ibere-riakebati-riamanoti- Rd			New road construction to gravel standards	Bush clearing,Heavy grading with watering and compaction,Culvert Installation and Cleaning, Gravelling,Box Culvert Construction, Removal of illegal structures
Nyaguku-Tombe Rioko-Gekano Riamakini-rianyakeya- riondari-gekano-riombui, inani-nyabara, westland- gekano Rds		To make the road passable in all weather seasons	New road construction to gravel standards	- Bush clearing,Heavy grading with watering and compaction,Culvert Installation and Cleaning, Gravelling,Box Culvert Construction, Removal of illegal structures
Nyabienga-kenyere- keginga-mecheo Rd Riomare-ribate-keginga Rd Riokendo- Riabichange- Mogumo Rd		To make the road passable in all weather seasons	- Grade and gravel a total of 124.5kms, - Install a total of 76m of 900mm Diam. Pipe culverts, - Construction of 3No. Box culverts, - Cleaning of 1120m of fully blocked 600mm Diam. Pipe culverts	Bush clearing,Heavy grading with watering and compaction,Culvert Installation and Cleaning, Gravelling,Box Culvert Construction, Removal of illegal structures B
Kijauri-tindereti Rd (D209) 18Km. Metamywa-tinderet- Riangombe-Manga (R45) 17kms		To make the roads passable in all weather seasons. Protection of road reserves	- Heavy Bush Clearing of a total of 28Ha	- Bush clearing, - Heavy grading with watering and compaction, - Culvert Installation and Cleaning, - Gravelling, - Box Culvert Construction - Removal of illegal structures

<p>Chebilat – Mwongori – Riakworo. (L1101) 12.5kms</p> <p>Kijauri -Nyansakia Riontonyi road (12kms)</p> <p>Gesima – Omoyo – Kijauri Rd (L1107) 11kms</p> <p>Nyaronge – Amakara L1102 (9kms) Chebilat – Isoge – AmakaraRd E195 (15kms)</p> <p>Omonyenya Kineni Manga Girls Rd R113 (12kms)</p> <p>Kineni- Saiga Ngiya – Magombo Rd UR26 (13Kms)</p> <p>Nyainogu Nderema Ensinyo Rd (6kms)</p> <p>Gucha – Kegogi – Nyagware Rd R52 (10kms)</p> <p>Nyaramba – Kiabonyoru Rd T1103 (6kms)</p> <p>Avacado-</p>				
---	--	--	--	--

<p>Onyaswabu/Nelson junction</p> <p>Okibori-Nyamiranga secondary-Ebate</p> <p>Pastor Sosi-Ebate</p> <p>Nyangware-Mote-Oguto</p> <p>Yaya center-Kiongong</p> <p>Mokomoni-Ontabo-Tombe</p>				
<p>Bondeni Magombo – nyamwaya Rd D237 (11Kms)</p> <p>Kebirigo-Bosiango-Nyakoria Rd E1056) 9Kms</p> <p>Kebirigo-Kiambere-Motagara Rd E1059 (9.5kms)</p>	<p>West Mugirango</p>	<p>To make the roads passable in all weather seasons. Protect road reserves</p>	<ul style="list-style-type: none"> - Grade and gravel a total of 109kms, - Install a total of 70m of 900mm Diam. Pipe culverts, - Construction of 3No. Box culverts, - Cleaning of 1500m of fully blocked 600mm Diam. Pipe culverts <p>-Heavy Bush Clearing of a total of 28Ha</p>	<ul style="list-style-type: none"> - Bush clearing, - Heavy grading with watering and compaction, - Culvert Installation and Cleaning, - Gravelling, <p>-Box Culvert Construction</p>

<p>Gesero-Makairo (7kms)</p> <p>Gesero-Igenaitembe- Muruga E1062 (8Kms)</p> <p>Sironga-Makairo- Bosiango (7.5kms)</p> <p>Sironga-Mabundu- Bobaracho (15Kms)</p> <p>Mabundu-Bonyunyu Rd R28 (4.5kms)</p> <p>Nyamira-Mabundu Rd R (4Kms)</p> <p>Nyamaiya-Obwari Rd D222 (11Kms)</p>				
---	--	--	--	--

<p>Nyamaiya-Bomabacho-Karota Rd R42 (9kms)</p> <p>Miruka – Nyamusi – Magwagwa Rd E208 (13.5kms)</p>				
<p>Tin’ga Kenyerere Rd (10kms),</p> <p>Nyaikuro – Tombe Rd D220 (4.5kms),</p> <p>Tombe – Miriri Rd E1057 (10.5kms),</p> <p>Nyangori – Kegati Rd E (12kms),</p> <p>Birongo – Gucha Rd (8kms),</p> <p>Irianyi – Kiomoso - Kiendege Rd (9.5kms)</p>	<p>Kitutu Masaba</p>	<p>To make the road passable in all weather seasons.</p> <p>To make the roads passable in all weather seasons. Protect road reserves</p>	<ul style="list-style-type: none"> - Grade and gravel a total of 109kms, - Install a total of 70m of 900mm Diam. Pipe culverts, - Construction of 3No. Box culverts, - Cleaning of 1500m of fully blocked 600mm Diam. Pipe culverts -Heavy Bush Clearing of a total of 28Ha - Grade and gravel a total of 64kms, - Install a total of 45m of 900mm Diam. Pipe culverts, - Construction of 2No. Box culverts, Cleaning of 900m of fully blocked 600mm Diam. Pipe culverts -Heavy Bush Clearing 	<ul style="list-style-type: none"> - Bush clearing, - Heavy grading with watering and compaction, - Culvert Installation and Cleaning, - Gravelling, -Box Culvert Construction - Bush clearing, - Heavy grading with watering and compaction, - Culvert Installation and Cleaning, - Gravelling, -Box Culvert Construction

<p>Sengera Manga – Kemera – Kiomoso Rd (11.5kms),</p> <p>Manga – Riamaranga Rd (5kms),</p> <p>Birongo – Rigoma Rd (7kms),</p> <p>Keroka-Rigoma-Rikenye Karantini Rd (13.5kms),</p> <p>Riyabe – Kenyerere – Nyangori Rd (7.5kms),</p> <p>Nyangori – Karantini-Mochenwa Rd (7Kms)</p> <p>Gesima-Esani-Kenyere Rd (10Kms)</p>			<p>of a total of 18Ha</p>	
--	--	--	---------------------------	--

Mosobeti-Esani Road E198 (8Kms)	North Mugirango			
Esani-Risa-Riakworo Road (7.8Kms)				
Ekerenyo-Obwari- Chabera Rd E1062 (17Kms)				
Obwari-Magwagwa Road E216 (8Kms)				
Ekerenyo-Magwagwa Rd R31 (7.5Kms)				
Binyaututu-Magwagwa- Sakwa-Nyaututu Rd (8.5Kms)				
Nyaramba-isinta- Mokomoni Rd E225 (12.5kms)				
Tombe-Itibo E1135				

(3.5Kms) Gekendo-karota Rd E217 (7Kms)				
Kebobora-Nyakaranga Pry –Omobirono rd		Make the road passable in all weather seasons	New roads construction to gravel standards	Setting Out,bush clearing,Heavy grading with watering and compaction,Culvert Installation and Cleaning,Gravelling.
Chabera – Ekerenyo road		Make the road passable in all weather seasons	New roads construction to gravel standards	Setting Out,bush clearing,Heavy grading with watering and compaction,Culvert Installation and Cleaning,Gravelling.
Iywero-Nyamusi – Orwaki-		Make the road passable in all weather seasons	New roads construction to gravel standards	Setting Out,bush clearing,Heavy grading with watering and compaction,Culvert Installation and Cleaning,Gravelling.
Nyamusi-Omokonge		Make the road passable in all weather seasons	New roads construction to gravel standards	Setting Out,bush clearing,Heavy grading with watering and compaction,Culvert Installation and Cleaning,Gravelling.
Nyabione-Nyakaranga		Make the road passable in all weather seasons	New roads construction to gravel standards	Setting Out,bush clearing,Heavy grading with watering and compaction,Culvert Installation and Cleaning,Gravelling.
Matongo – Enchoro -Riobuya – Egetonto – Kebobora		Make the road passable in all weather seasons	New roads construction to gravel standards	Setting Out,bush clearing,Heavy grading with watering and compaction,Culvert Installation and Cleaning,Gravelling.
Gesura – Iywero road		Make the road passable in all weather seasons	New roads construction to gravel standards	Setting Out,bush clearing,Heavy grading with watering and compaction,Culvert Installation and Cleaning,Gravelling.

Egetonto – Kegogi- Nyambambo -Nyamusi – Edip – Nyambambo Rds		Make the road passable in all weather seasons	New roads construction to gravel standards	Setting Out,bush clearing,Heavy grading with watering and compaction,Culvert Installation and Cleaning,Gravelling
Nyamusi-Engoto pry		Make the road passable in all weather seasons	New roads construction to gravel standards	Setting Out,bush clearing,Heavy grading with watering and compaction,Culvert Installation and Cleaning,Gravelling.
Nyagegoboko mkt- Nyututu pry-Ongera pry		Make the road passable in all weather seasons	New roads construction to gravel standards	Setting Out,bush clearing,Heavy grading with watering and compaction,Culvert Installation and Cleaning,Gravelling.
Kiomanga pry-Gekonge pry		Make the road passable in all weather seasons	New roads construction to gravel standards	Setting Out,bush clearing,Heavy grading with watering and compaction,Culvert Installation and Cleaning,Gravelling.
,	Gesima wd	Make the road passable in all weather seasons	New roads construction to gravel standards	Setting Out,bush clearing,Heavy grading with watering and compaction,Culvert Installation and Cleaning,Gravelling.
Mochenwa-karatini-Esani- Risa-Riakworo Rd,		Make the road passable in all weather seasons	New roads construction to gravel standards	Setting Out,bush clearing,Heavy grading with watering and compaction,Culvert Installation and Cleaning,Gravelling.
Enchoro – Kiamitengi – Matutu		Make the road passable in all weather seasons	New roads construction to gravel standards	Setting Out,bush clearing,Heavy grading with watering and compaction,Culvert Installation and Cleaning,Gravelling.
Riamisiani – Rigetugi,		Make the road passable in all weather seasons	New roads construction to gravel standards	Setting Out,bush clearing,Heavy grading with watering and compaction,Culvert Installation and Cleaning,Gravelling.
Riacheeta – Karatini,		Make the road passable in all weather seasons	New roads construction	Setting Out,bush clearing,Heavy grading with watering and compaction,Culvert Installation and

			to gravel standards	Cleaning,Gravelling.
Riokworo-Nyaborare,		Make the road passable in all weather seasons	New roads construction to gravel standards	Setting Out,bush clearing,Heavy grading with watering and compaction,Culvert Installation and Cleaning,Gravelling.
Mosobeti – Riooga – Esani Road		Make the road passable in all weather seasons	New roads construction to gravel standards	Setting Out,bush clearing,Heavy grading with watering and compaction,Culvert Installation and Cleaning,Gravelling.
Nyamoteneni – Mosobeti,		Make the road passable in all weather seasons	New roads construction to gravel standards	Setting Out,bush clearing,Heavy grading with watering and compaction,Culvert Installation and Cleaning,Gravelling.
Nyaboraine – Riokworo,		Make the road passable in all weather seasons	New roads construction to gravel standards	Setting Out, bush clearing, Heavy grading with watering and compaction, Culvert Installation and Cleaning, Gravelling.
Nyamoteneni – Mosobeti		Make the road passable in all weather seasons	New roads construction to gravel standards	Setting Out,bush clearing,Heavy grading with watering and compaction,Culvert Installation and Cleaning,Gravelling.
Omoyo – Getare SDA – Nyabogoye Road		Make the road passable in all weather seasons	New roads construction to gravel standards	Setting Out,bush clearing,Heavy grading with watering and compaction,Culvert Installation and Cleaning,Gravelling.
Riakworo-Risa-Esani-Kebuko-Gesabakwa 9km		Make the road passable in all weather seasons	New roads construction to gravel standards	Setting Out,bush clearing,Heavy grading with watering and compaction,Culvert Installation and Cleaning,Gravelling.
Enchoro-kiamitengi-Matutu-Iranya 4.5km		Make the road passable in all weather seasons	New roads construction to gravel standards	Setting Out,bush clearing,Heavy grading with watering and compaction,Culvert Installation and Cleaning,Gravelling.

Nyaronge-Nyabuya-Gesima 6km		Make the road passable in all weather seasons	New roads construction to gravel standards	Setting Out,bush clearing,Heavy grading with watering and compaction,Culvert Installation and Cleaning,Gravelling.
Sokobe-Riacheeta-Karatini 4km		Make the road passable in all weather seasons	New roads construction to gravel standards	Setting Out,bush clearing,Heavy grading with watering and compaction,Culvert Installation and Cleaning,Gravelling.
Riakworo-Nyaboraire-Nyakongo 7km		Make the road passable in all weather seasons	New roads construction to gravel standards	Setting Out,bush clearing,Heavy grading with watering and compaction,Culvert Installation and Cleaning,Gravelling.
Riokwo-Nyamoteneni-Mosobeti 3.5km		Make the road passable in all weather seasons	New roads construction to gravel standards	Setting Out,bush clearing,Heavy grading with watering and compaction,Culvert Installation and Cleaning,Gravelling.
Mosobeti-rioga-risa		Make the road passable in all weather seasons	New roads construction to gravel standards	Setting Out,bush clearing,Heavy grading with watering and compaction,Culvert Installation and Cleaning,Gravelling.
Nyamokoroto-sokobe-borabu		Make the road passable in all weather seasons	New roads construction to gravel standards	Setting Out,bush clearing,Heavy grading with watering and compaction,Culvert Installation and Cleaning,Gravelling.
Keroka posta-metamanywa		Make the road passable in all weather seasons	New roads construction to gravel standards	Setting Out,bush clearing,Heavy grading with watering and compaction,Culvert Installation and Cleaning,Gravelling.
Karatini-nyabiosi-enchoro		Make the road passable in all weather seasons	New roads construction to gravel standards	Setting Out,bush clearing,Heavy grading with watering and compaction,Culvert Installation and Cleaning,Gravelling.
Gesima-botana-nyabogoye		Make the road passable in all weather seasons	New roads construction to gravel standards	Setting Out,bush clearing,Heavy grading with watering and compaction,Culvert Installation and

				Cleaning,Gravelling.
Gesero-Gesiga sec-Ekerubo-Sironga		Make the road passable in all weather seasons	New roads construction to gravel standards	Setting Out,bush clearing,Heavy grading with watering and compaction,Culvert Installation and Cleaning,Gravelling.
Riomuku-Rianyakewengo-Getare-Monyara		Make the road passable in all weather seasons	New roads construction to gravel standards	Setting Out,bush clearing,Heavy grading with watering and compaction,Culvert Installation and Cleaning,Gravelling.
Gesero Ndurumo-Kuura TBC-Riamobaya		Make the road passable in all weather seasons	New roads construction to gravel standards	Setting Out,bush clearing,Heavy grading with watering and compaction,Culvert Installation and Cleaning,Gravelling.
Rianyanchongi-Kianyabao-Riosoro-Riakimai-Riaganda		Make the road passable in all weather seasons	New roads construction to gravel standards	Setting Out,bush clearing,Heavy grading with watering and compaction,Culvert Installation and Cleaning,Gravelling.
Riverside-Kegoro-Moruga-Abaya		Make the road passable in all weather seasons	New roads construction to gravel standards	Setting Out,bush clearing,Heavy grading with watering and compaction,Culvert Installation and Cleaning,Gravelling.
Tinga-Tinga pry-Rianyachoti		Make the road passable in all weather seasons	New roads construction to gravel standards	Setting Out,bush clearing,Heavy grading with watering and compaction,Culvert Installation and Cleaning,Gravelling.
Ekerubo-Mora bero-Ekori		Make the road passable in all weather seasons	New roads construction to gravel standards	Setting Out,bush clearing,Heavy grading with watering and compaction,Culvert Installation and Cleaning,Gravelling.
Ekorok-Kianungu-Sirate		Make the road passable in all weather seasons	New roads construction to gravel standards	Setting Out, bush clearing, Heavy grading with watering and compaction, Culvert Installation and Cleaning,

				Gravelling.
Gesero-Gesiaga sec- Bokaya-Ekerubo-sironga,		Make the road passable in all weather seasons	New roads construction to gravel standards	Setting Out, bush clearing, Heavy grading with watering and compaction, Culvert Installation and Cleaning, Gravelling.
Enchoro – Mosobeti – Motagara – Mariba		Make the road passable in all weather seasons	New roads construction to gravel standards	Setting Out, bush clearing, Heavy grading with watering and compaction, Culvert Installation and Cleaning, Gravelling.
Riamori – Nyagweta – Kegogi – Riamobaya- Kuura – Riamoni – Ndurummo – Binama – Gesero		Make the road passable in all weather seasons	New roads construction to gravel standards	Setting Out, bush clearing, Heavy grading with watering and compaction, Culvert Installation and Cleaning, Gravelling.
Gesero – Ekorok – Tinga – Nyachururu – Nyangena		Make the road passable in all weather seasons	New roads construction to gravel standards	Setting Out, bush clearing, Heavy grading with watering and compaction, Culvert Installation and Cleaning, Gravelling.
Riverside – Gucha – Riakimai boarding		Make the road passable in all weather seasons	New roads construction to gravel standards	Setting Out, bush clearing, Heavy grading with watering and compaction, Culvert Installation and Cleaning, Gravelling.
Riakima TBC – Nyachogochogo		Make the road passable in all weather seasons	New roads construction to gravel standards	Setting Out, bush clearing, Heavy grading with watering and compaction, Culvert Installation and Cleaning, Gravelling.
Kiangincha – Riamokamba – Gesero Rds		Make the road passable in all weather seasons	New roads construction to gravel standards	Setting Out, bush clearing, Heavy grading with watering and compaction, Culvert Installation and Cleaning, Gravelling.
Kabatia-riamasare- bokimo kenyanya		Make the road passable in all weather seasons	New roads construction to gravel standards	Setting Out, bush clearing, Heavy grading with watering and compaction, Culvert Installation and Cleaning, Gravelling.

Kenyenya – Riongoro – Nyabisimba road,		Make the road passable in all weather seasons	New roads construction to gravel standards	Setting Out,bush clearing,Heavy grading with watering and compaction,Culvert Installation and Cleaning,Gravelling.
NyabaraIbere – Ekenyoro –Gucha buying centre		Make the road passable in all weather seasons	New roads construction to gravel standards	Setting Out,bush clearing,Heavy grading with watering and compaction,Culvert Installation and Cleaning,Gravelling.
Kebirigo main rd-kibirigo pry-kebirigo SDA-kebirigo main road		Make the road passable in all weather seasons	New roads construction to gravel standards	Setting Out,bush clearing,Heavy grading with watering and compaction,Culvert Installation and Cleaning,Gravelling.
Kenyenya – Rianyanenda Rirumi- kabatia		Make the road passable in all weather seasons	New roads construction to gravel standards	Setting Out,bush clearing,Heavy grading with watering and compaction,Culvert Installation and Cleaning,Gravelling.
Nyainagu bridge-nyamagu pry- Riokinyi tbc-Bokimo rd		Make the road passable in all weather seasons	New roads construction to gravel standards	Setting Out,bush clearing,Heavy grading with watering and compaction,Culvert Installation and Cleaning,Gravelling.
Karatini-Gucha tbc Riamariga SDA - Kiambere		Make the road passable in all weather seasons	New roads construction to gravel standards	Setting Out,bush clearing,Heavy grading with watering and compaction,Culvert Installation and Cleaning,Gravelling.
1. Nyagoso-Nyamiacho-Kioge-Bombo central – Kegogi- Nyamunuri		Make the road passable in all weather seasons	New roads construction to gravel standards	Setting Out,bush clearing,Heavy grading with watering and compaction,Culvert Installation and Cleaning,Gravelling.
2.Nyamiacho-omokonge-mageri-kioge-boera-entono-ntana-bokimori-nyambiri-rianari-kerobo h/c-nyamonuri-baranabas		Make the road passable in all weather seasons	New roads construction to gravel standards	Setting Out,bush clearing,Heavy grading with watering and compaction,Culvert Installation and Cleaning,Gravelling.

3.Mabariri-ntana sec.-Itibopry-Entono dispensary		Make the road passable in all weather seasons	New roads construction to gravel standards	Setting Out,bush clearing,Heavy grading with watering and compaction,Culvert Installation and Cleaning,Gravelling.
4.Kioge-Nyabwere-eronge sec		Make the road passable in all weather seasons	New roads construction to gravel standards	Setting Out,bush clearing,Heavy grading with watering and compaction,Culvert Installation and Cleaning,Gravelling.
5.Ntana sec-Kanani		Make the road passable in all weather seasons	New roads construction to gravel standards	Setting Out,bush clearing,Heavy grading with watering and compaction,Culvert Installation and Cleaning,Gravelling.
Nyabite-Rangenyo-Nyakunguru-bonyunyu Nyansabakwa-Matierio-Ratandi		Make the road passable in all weather seasons	New roads construction to gravel standards	Setting Out,bush clearing,Heavy grading with watering and compaction,Culvert Installation and Cleaning,Gravelling.
Mhiruka-Nyandoche ibere-Getari		Make the road passable in all weather seasons	New roads construction to gravel standards	Setting Out,bush clearing,Heavy grading with watering and compaction,Culvert Installation and Cleaning,Gravelling.
miruka-bonosano-bwondiro-rateli		Make the road passable in all weather seasons	New roads construction to gravel standards	Setting Out,bush clearing,Heavy grading with watering and compaction,Culvert Installation and Cleaning,Gravelling.
Nyamaiya-Bwokongo-Nyasure		Make the road passable in all weather seasons	New roads construction to gravel standards	Setting Out,bush clearing,Heavy grading with watering and compaction,Culvert Installation and Cleaning,Gravelling.
Nyangoko – Nyabinyinyi		Make the road passable in all weather seasons	New roads construction to gravel standards	Setting Out,bush clearing,Heavy grading with watering and compaction,Culvert Installation and Cleaning,Gravelling.

Bondeka-Marara-Getari		Make the road passable in all weather seasons	New roads construction to gravel standards	Setting Out,bush clearing,Heavy grading with watering and compaction,Culvert Installation and Cleaning,Gravelling.
Bokongo-Omwaro-Nyambiri		Make the road passable in all weather seasons	New roads construction to gravel standards	Setting Out,bush clearing,Heavy grading with watering and compaction,Culvert Installation and Cleaning,Gravelling.
Matorera-Eaka		Make the road passable in all weather seasons	New roads construction to gravel standards	Setting Out,bush clearing,Heavy grading with watering and compaction,Culvert Installation and Cleaning,Gravelling.
Mangongo-Masosa-Nyarombe		Make the road passable in all weather seasons	New roads construction to gravel standards	Setting Out,bush clearing,Heavy grading with watering and compaction,Culvert Installation and Cleaning,Gravelling.
Bondeka junction-Kemasake		Make the road passable in all weather seasons	New roads construction to gravel standards	Setting Out,bush clearing,Heavy grading with watering and compaction,Culvert Installation and Cleaning,Gravelling.
Gekomoni-Kemasake-Mabuti		Make the road passable in all weather seasons	New roads construction to gravel standards	Setting Out,bush clearing,Heavy grading with watering and compaction,Culvert Installation and Cleaning,Gravelling.
Gesurura-Nyakorera-Bogensinsi		Make the road passable in all weather seasons	New roads construction to gravel standards	Setting Out,bush clearing,Heavy grading with watering and compaction,Culvert Installation and Cleaning,Gravelling.
Nyabite-Bonyabomite(Rianyabichu)		Make the road passable in all weather seasons	New roads construction to gravel standards	Setting Out,bush clearing,Heavy grading with watering and compaction,Culvert Installation and Cleaning,Gravelling.

Nyansabakwa-Mang'ong'o		Make the road passable in all weather seasons	New roads construction to gravel standards	Setting Out,bush clearing,Heavy grading with watering and compaction,Culvert Installation and Cleaning,Gravelling.
Sirembe-Nyarombe-Matotera		Make the road passable in all weather seasons	New roads construction to gravel standards	Setting Out,bush clearing,Heavy grading with watering and compaction,Culvert Installation and Cleaning,Gravelling.
Ekona-nyagekoboko-Magena marabou-Esereti-Bisembard		Make the road passable in all weather seasons	New roads construction to gravel standards	Setting Out,bush clearing,Heavy grading with watering and compaction,Culvert Installation and Cleaning,Gravelling.
Ekona-Rikuruma-Gitwebe-Morembe		Make the road passable in all weather seasons	New roads construction to gravel standards	Setting Out,bush clearing,Heavy grading with watering and compaction,Culvert Installation and Cleaning,Gravelling.
Kebuye-Kenyerere-Ngong rd		Make the road passable in all weather seasons	New roads construction to gravel standards	Setting Out,bush clearing,Heavy grading with watering and compaction,Culvert Installation and Cleaning,Gravelling.
Kebute- Bisembe rd		Make the road passable in all weather seasons	New roads construction to gravel standards	Setting Out,bush clearing,Heavy grading with watering and compaction,Culvert Installation and Cleaning,Gravelling.
Riomego-Nyakenyomisias-Bisembe rd		Make the road passable in all weather seasons	New roads construction to gravel standards	Setting Out,bush clearing,Heavy grading with watering and compaction,Culvert Installation and Cleaning,Gravelling.
Magwagwa-Nyakeiyo – Nyabwaro rd		Make the road passable in all weather seasons	New roads construction to gravel standards	Setting Out,bush clearing,Heavy grading with watering and compaction,Culvert Installation and Cleaning,Gravelling.
Magwagwa—Ikamu-		Make the road passable in all weather seasons	New roads construction	Setting Out,bush clearing,Heavy grading with watering and compaction,Culvert Installation and

esamba rd			to gravel standards	Cleaning,Gravelling.
Magwagwa-nyabigena-Bureti		Make the road passable in all weather seasons	New roads construction to gravel standards	Setting Out,bush clearing,Heavy grading with watering and compaction,Culvert Installation and Cleaning,Gravelling.
Nyamonge –karota rd		Make the road passable in all weather seasons	New roads construction to gravel standards	Setting Out,bush clearing,Heavy grading with watering and compaction,Culvert Installation and Cleaning,Gravelling.
Stage milka-misambi rd		Make the road passable in all weather seasons	New roads construction to gravel standards	Setting Out,bush clearing,Heavy grading with watering and compaction,Culvert Installation and Cleaning,Gravelling.
Nyabigena- bisembe rd		Make the road passable in all weather seasons	New roads construction to gravel standards	Setting Out,bush clearing,Heavy grading with watering and compaction,Culvert Installation and Cleaning,Gravelling.
Magena marabu-ngong rd		Make the road passable in all weather seasons	New roads construction to gravel standards	Setting Out,bush clearing,Heavy grading with watering and compaction,Culvert Installation and Cleaning,Gravelling.
Matorora-Isinta-Chaina-Nyasio-Omokirondo-Nyagokiani		Make the road passable in all weather seasons	New roads construction to gravel standards	Setting Out,bush clearing,Heavy grading with watering and compaction,Culvert Installation and Cleaning,Gravelling.
Nyaramba-Enkinda – Iteresi-Kebabe—Ekerenyo		Make the road passable in all weather seasons	New roads construction to gravel standards	Setting Out,bush clearing,Heavy grading with watering and compaction,Culvert Installation and Cleaning,Gravelling.
Isinta-Getankwa-Kenyoro		Make the road passable in all weather seasons	New roads construction to gravel standards	Setting Out,bush clearing,Heavy grading with watering and compaction,Culvert Installation and

				Cleaning,Gravelling.
Bonyunyu-Keburunga-Getai boarding-Kambi matope		Make the road passable in all weather seasons	New roads construction to gravel standards	Setting Out,bush clearing,Heavy grading with watering and compaction,Culvert Installation and Cleaning,Gravelling.
Kyanja-Kiang'ombe-Omwamba-Riamwenga-Nyangokiani		Make the road passable in all weather seasons	New roads construction to gravel standards	Setting Out,bush clearing,Heavy grading with watering and compaction,Culvert Installation and Cleaning,Gravelling.
Tarmaking of tombe-isinta-mokomoni		Make the road passable in all weather seasons	New roads construction to gravel standards	Setting Out,bush clearing,Heavy grading with watering and compaction,Culvert Installation and Cleaning,Gravelling.
Itibo mkt-nyaigwa		Make the road passable in all weather seasons	New roads construction to gravel standards	Setting Out,bush clearing,Heavy grading with watering and compaction,Culvert Installation and Cleaning,Gravelling.
nyatende-kiabonyoru TBC		Make the road passable in all weather seasons	New roads construction to gravel standards	Setting Out,bush clearing,Heavy grading with watering and compaction,Culvert Installation and Cleaning,Gravelling.
Tarmac nyaramba-itibo		Make the road passable in all weather seasons	New roads construction to gravel standards	Setting Out,bush clearing,Heavy grading with watering and compaction,Culvert Installation and Cleaning,Gravelling.
Riamenyanya-enkinda TBC-kebabe TBC-Kanyancha TBC-Boisabi		Make the road passable in all weather seasons	New roads construction to gravel standards	Setting Out,bush clearing,Heavy grading with watering and compaction,Culvert Installation and Cleaning,Gravelling.
Itibo-iteresi TBC		Make the road passable in all weather seasons	New roads construction to gravel standards	Setting Out,bush clearing,Heavy grading with watering and compaction,Culvert Installation and Cleaning,Gravelling.
Itibo-nyamwanchani TBC & sec.-rionchiri-		Make the road passable in all weather seasons	New roads construction	Setting Out,bush clearing,Heavy grading with watering and compaction,Culvert Installation and

getankwa-kiabonyoru			to gravel standards	Cleaning,Gravelling.
Riamorubi-riakerandi-riapaulo-getankwa		Make the road passable in all weather seasons	New roads construction to gravel standards	Setting Out,bush clearing,Heavy grading with watering and compaction,Culvert Installation and Cleaning,Gravelling.
Omwamba-rianyariaro-okabinga-omokirondo		Make the road passable in all weather seasons	New roads construction to gravel standards	Setting Out,bush clearing,Heavy grading with watering and compaction,Culvert Installation and Cleaning,Gravelling.
Kiangombe-kirwanda-nyasio PAG		Make the road passable in all weather seasons	New roads construction to gravel standards	Setting Out,bush clearing,Heavy grading with watering and compaction,Culvert Installation and Cleaning,Gravelling.
Ekige-Ebenezer-Sda church Bridge		Make the road passable in all weather seasons	New roads construction to gravel standards	Setting Out,bush clearing,Heavy grading with watering and compaction,Culvert Installation and Cleaning,Gravelling.
Mekenene SDA riagesengi-Mwongori maziwa		Make the road passable in all weather seasons	New roads construction to gravel standards	Setting Out,bush clearing,Heavy grading with watering and compaction,Culvert Installation and Cleaning,Gravelling.
Mwongori market-Riosongo		Make the road passable in all weather seasons	New roads construction to gravel standards	Setting Out,bush clearing,Heavy grading with watering and compaction,Culvert Installation and Cleaning,Gravelling.
Riamoseti-Riabwacha		Make the road passable in all weather seasons	New roads construction to gravel standards	Setting Out,bush clearing,Heavy grading with watering and compaction,Culvert Installation and Cleaning,Gravelling.
Rinyariaro-St, Mathias		Make the road passable in all weather seasons	New roads construction to gravel standards	Setting Out,bush clearing,Heavy grading with watering and compaction,Culvert Installation and Cleaning,Gravelling.

Mwongori sec –mogusii estate		Make the road passable in all weather seasons	New roads construction to gravel standards	Setting Out,bush clearing,Heavy grading with watering and compaction,Culvert Installation and Cleaning,Gravelling.
Mogusii estate-Omotobo		Make the road passable in all weather seasons	New roads construction to gravel standards	Setting Out,bush clearing,Heavy grading with watering and compaction,Culvert Installation and Cleaning,Gravelling.
Riasiika-magura-Riokemwa		Make the road passable in all weather seasons	New roads construction to gravel standards	Setting Out,bush clearing,Heavy grading with watering and compaction,Culvert Installation and Cleaning,Gravelling.
Mokomoni -Gietai sec Keritor estate- Nyankoro primary-nyakoro SDA-Kerito estate		Make the road passable in all weather seasons	New roads construction to gravel standards	Setting Out,bush clearing,Heavy grading with watering and compaction,Culvert Installation and Cleaning,Gravelling.
Kerumbe buying center- Kerumbe dispensary		Make the road passable in all weather seasons	New roads construction to gravel standards	Setting Out,bush clearing,Heavy grading with watering and compaction,Culvert Installation and Cleaning,Gravelling.
Chebilat back street to Rionywere		Make the road passable in all weather seasons	New roads construction to gravel standards	Setting Out,bush clearing,Heavy grading with watering and compaction,Culvert Installation and Cleaning,Gravelling.
Kegogi-Ontimbu society (Mokomoni)-Esosanyati with 3 bridges		Make the road passable in all weather seasons	New roads construction to gravel standards	Setting Out,bush clearing,Heavy grading with watering and compaction,Culvert Installation and Cleaning,Gravelling.
Nyageita-Nyakongo-Kegogi		Make the road passable in all weather seasons	New roads construction to gravel standards	Setting Out,bush clearing,Heavy grading with watering and compaction,Culvert Installation and Cleaning,Gravelling.

Gucha-Getare-Rianyakaga Taboti-Egentubi-Gucha Check point-Ikuruma- Chinche-Eaka		Make the road passable in all weather seasons	New roads construction to gravel standards	Setting Out,bush clearing,Heavy grading with watering and compaction,Culvert Installation and Cleaning,Gravelling.
Eronge-Magabi- Nyanchoka with 3 bridges		Make the road passable in all weather seasons	New roads construction to gravel standards	Setting Out,bush clearing,Heavy grading with watering and compaction,Culvert Installation and Cleaning,Gravelling.
AmatierioOkenisi- Onyaswabu junction		Make the road passable in all weather seasons	New roads construction to gravel standards	Setting Out,bush clearing,Heavy grading with watering and compaction,Culvert Installation and Cleaning,Gravelling.
Onseka-Eturungi- Amakura-Emboye		Make the road passable in all weather seasons	New roads construction to gravel standards	Setting Out,bush clearing,Heavy grading with watering and compaction,Culvert Installation and Cleaning,Gravelling.
Isicha-Menyikwa- Bomondo		Make the road passable in all weather seasons	New roads construction to gravel standards	Setting Out,bush clearing,Heavy grading with watering and compaction,Culvert Installation and Cleaning,Gravelling.
Onseka-Kegogi- NyarambaEpambu- Nyamira town		Make the road passable in all weather seasons	New roads construction to gravel standards	Setting Out,bush clearing,Heavy grading with watering and compaction,Culvert Installation and Cleaning,Gravelling.
AroketiMokomoni- Nyabara ibere-Kebirigo		Make the road passable in all weather seasons	New roads construction to gravel standards	Setting Out,bush clearing,Heavy grading with watering and compaction,Culvert Installation and Cleaning,Gravelling.
Nyagware-Omonono- Obange		Make the road passable in all weather seasons	New roads construction to gravel standards	Setting Out,bush clearing,Heavy grading with watering and compaction,Culvert Installation and Cleaning,Gravelling.

Nyangonge-Isicha kianyabongere		Make the road passable in all weather seasons	New roads construction to gravel standards	Setting Out,bush clearing,Heavy grading with watering and compaction,Culvert Installation and Cleaning,Gravelling.
Viongozi center-Isicha		Make the road passable in all weather seasons	New roads construction to gravel standards	Setting Out,bush clearing,Heavy grading with watering and compaction,Culvert Installation and Cleaning,Gravelling.
Eaka-Kerenda lower-Samwera- nyabiotonyaramba		Make the road passable in all weather seasons	New roads construction to gravel standards	Setting Out,bush clearing,Heavy grading with watering and compaction,Culvert Installation and Cleaning,Gravelling.
Omogonchoro- Mokorongosi-Eriasibu		Make the road passable in all weather seasons	New roads construction to gravel standards	Setting Out,bush clearing,Heavy grading with watering and compaction,Culvert Installation and Cleaning,Gravelling.
Kiendege-Charara- Nyagechenche		Make the road passable in all weather seasons	New roads construction to gravel standards	Setting Out,bush clearing,Heavy grading with watering and compaction,Culvert Installation and Cleaning,Gravelling.
Kiendege-Nnyachichi- Omogonchoro		Make the road passable in all weather seasons	New roads construction to gravel standards	Setting Out,bush clearing,Heavy grading with watering and compaction,Culvert Installation and Cleaning,Gravelling.
Riamituga-Nyamarambe		Make the road passable in all weather seasons	New roads construction to gravel standards	Setting Out,bush clearing,Heavy grading with watering and compaction,Culvert Installation and Cleaning,Gravelling.
Omogochoro-Ekenyoro— chogoo		Make the road passable in all weather seasons	New roads construction to gravel standards	Setting Out,bush clearing,Heavy grading with watering and compaction,Culvert Installation and Cleaning,Gravelling.

Esaba-Ngoro amwaga-Bondeka		Make the road passable in all weather seasons	New roads construction to gravel standards	Setting Out,bush clearing,Heavy grading with watering and compaction,Culvert Installation and Cleaning,Gravelling.
Kemera-Nyaneke tbc		Make the road passable in all weather seasons	New roads construction to gravel standards	Setting Out,bush clearing,Heavy grading with watering and compaction,Culvert Installation and Cleaning,Gravelling.
Nyagena-Mokorogoinywa		Make the road passable in all weather seasons	New roads construction to gravel standards	Setting Out,bush clearing,Heavy grading with watering and compaction,Culvert Installation and Cleaning,Gravelling.
Nyagechenche-mokwerero		Make the road passable in all weather seasons	New roads construction to gravel standards	Setting Out,bush clearing,Heavy grading with watering and compaction,Culvert Installation and Cleaning,Gravelling.
Nyabioto junction-Bigogo		Make the road passable in all weather seasons	New roads construction to gravel standards	Setting Out,bush clearing,Heavy grading with watering and compaction,Culvert Installation and Cleaning,Gravelling.
Riosongo-Nyaisa-Moromba		Make the road passable in all weather seasons	New roads construction to gravel standards	Setting Out,bush clearing,Heavy grading with watering and compaction,Culvert Installation and Cleaning,Gravelling.
Ekerubo SDA bridge		Make the road passable in all weather seasons	New roads construction to gravel standards	Setting Out,bush clearing,Heavy grading with watering and compaction,Culvert Installation and Cleaning,Gravelling.
Nyaikuro Ogango – monsore-Nyamache mange		Make the road passable in all weather seasons	New roads construction to gravel standards	Setting Out,bush clearing,Heavy grading with watering and compaction,Culvert Installation and Cleaning,Gravelling.
Nyabioto bridge point-		Make the road passable in all weather seasons	New roads construction	Setting Out,bush clearing,Heavy grading with watering and compaction,Culvert Installation and

Sengera- Nyamare			to gravel standards	Cleaning,Gravelling.
Manga- Ikobe junction		Make the road passable in all weather seasons	New roads construction to gravel standards	Setting Out,bush clearing,Heavy grading with watering and compaction,Culvert Installation and Cleaning,Gravelling.
Ikobe buying center- Gianche- Kembra		Make the road passable in all weather seasons	New roads construction to gravel standards	Setting Out,bush clearing,Heavy grading with watering and compaction,Culvert Installation and Cleaning,Gravelling.
Riamaranga-Omogwa buying cente-rKaburi Bridge		Make the road passable in all weather seasons	New roads construction to gravel standards	Setting Out,bush clearing,Heavy grading with watering and compaction,Culvert Installation and Cleaning,Gravelling.
Riamaranga-St mary' kembra		Make the road passable in all weather seasons	New roads construction to gravel standards	Setting Out,bush clearing,Heavy grading with watering and compaction,Culvert Installation and Cleaning,Gravelling.
Nyaikuro- Gesure-Iringa		Make the road passable in all weather seasons	New roads construction to gravel standards	Setting Out,bush clearing,Heavy grading with watering and compaction,Culvert Installation and Cleaning,Gravelling.
Manga- Morako Iringa		Make the road passable in all weather seasons	New roads construction to gravel standards	Setting Out,bush clearing,Heavy grading with watering and compaction,Culvert Installation and Cleaning,Gravelling.
Bigogo-bokondo nyamache manga		Make the road passable in all weather seasons	New roads construction to gravel standards	Setting Out,bush clearing,Heavy grading with watering and compaction,Culvert Installation and Cleaning,Gravelling.
Bwonyangi-ikonge primary-Bomorito		Make the road passable in all weather seasons	New roads construction to gravel standards	Setting Out,bush clearing,Heavy grading with watering and compaction,Culvert Installation and Cleaning,Gravelling.

Nyamokeri-Embonga		Make the road passable in all weather seasons	New roads construction to gravel standards	Setting Out,bush clearing,Heavy grading with watering and compaction,Culvert Installation and Cleaning,Gravelling.
Sironga-Nyaisa		Make the road passable in all weather seasons	New roads construction to gravel standards	Setting Out,bush clearing,Heavy grading with watering and compaction,Culvert Installation and Cleaning,Gravelling.
Bundo-Charachani		Make the road passable in all weather seasons	New roads construction to gravel standards	Setting Out,bush clearing,Heavy grading with watering and compaction,Culvert Installation and Cleaning,Gravelling.
Nyameru-Geteri		Make the road passable in all weather seasons	New roads construction to gravel standards	Setting Out,bush clearing,Heavy grading with watering and compaction,Culvert Installation and Cleaning,Gravelling.
Marindi-Kenyorori Nyaisa		Make the road passable in all weather seasons	New roads construction to gravel standards	Setting Out,bush clearing,Heavy grading with watering and compaction,Culvert Installation and Cleaning,Gravelling.
Marindi-Nyabomita		Make the road passable in all weather seasons	New roads construction to gravel standards	Setting Out,bush clearing,Heavy grading with watering and compaction,Culvert Installation and Cleaning,Gravelling.
Mabundu-Mborogo-Nyamotentemi		Make the road passable in all weather seasons	New roads construction to gravel standards	Setting Out,bush clearing,Heavy grading with watering and compaction,Culvert Installation and Cleaning,Gravelling.
Embonga-Bomorito-Ikonge-Getare		Make the road passable in all weather seasons	New roads construction to gravel standards	Setting Out,bush clearing,Heavy grading with watering and compaction,Culvert Installation and Cleaning,Gravelling.
Mabundu-Bobembe village polytechnic		Make the road passable in all weather seasons	New roads construction to gravel standards	Setting Out,bush clearing,Heavy grading with watering and compaction,Culvert Installation and Cleaning,Gravelling.

Geteri-Nyamotentemi-Nyamatoki		Make the road passable in all weather seasons	New roads construction to gravel standards	Setting Out,bush clearing,Heavy grading with watering and compaction,Culvert Installation and Cleaning,Gravelling.
Nyaguku-Tombe		Make the road passable in all weather seasons	New roads construction to gravel standards	Setting Out,bush clearing,Heavy grading with watering and compaction,Culvert Installation and Cleaning,Gravelling.
Rioko-Gekano		Make the road passable in all weather seasons	New roads construction to gravel standards	Setting Out,bush clearing,Heavy grading with watering and compaction,Culvert Installation and Cleaning,Gravelling.
Riamakini-rianyakeya-riondari		Make the road passable in all weather seasons	New roads construction to gravel standards	Setting Out,bush clearing,Heavy grading with watering and compaction,Culvert Installation and Cleaning,Gravelling.
gekano-riombui, inani-nyabara, westlandgekanoRd		Make the road passable in all weather seasons	New roads construction to gravel standards	Setting Out,bush clearing,Heavy grading with watering and compaction,Culvert Installation and Cleaning,Gravelling.
Ekoro-Sirate rd(lower rd)		Make the road passable in all weather seasons	New roads construction to gravel standards	Setting Out,bush clearing,Heavy grading with watering and compaction,Culvert Installation and Cleaning,Gravelling.
Rianyabio-Riabichanga (lower Nyamemiso)		Make the road passable in all weather seasons	New roads construction to gravel standards	Setting Out,bush clearing,Heavy grading with watering and compaction,Culvert Installation and Cleaning,Gravelling.
Rianyacheo-Nyakemincha TBC-Nyamanagu poly rd		Make the road passable in all weather seasons	New roads construction to gravel standards	Setting Out,bush clearing,Heavy grading with watering and compaction,Culvert Installation and Cleaning,Gravelling.
Riakerandi-Mokomoni-Nyantaro rd		Make the road passable in all weather seasons	New roads construction to gravel standards	Setting Out,bush clearing,Heavy grading with watering and compaction,Culvert Installation and Cleaning,Gravelling.

Riamachana-Riamachana pry-church rd		Make the road passable in all weather seasons	New roads construction to gravel standards	Setting Out,bush clearing,Heavy grading with watering and compaction,Culvert Installation and Cleaning,Gravelling.
Riyankeya-Mosigi-Riakerandi rd		Make the road passable in all weather seasons	New roads construction to gravel standards	Setting Out,bush clearing,Heavy grading with watering and compaction,Culvert Installation and Cleaning,Gravelling.
Nyambaria high sch- Nyambaria water project access rd		Make the road passable in all weather seasons	New roads construction to gravel standards	Setting Out,bush clearing,Heavy grading with watering and compaction,Culvert Installation and Cleaning,Gravelling.
Gekano Tbc-Kegogi Tbc-Nyakemogwa sda-Eronge sda-St Joseph church-Gucha		Make the road passable in all weather seasons	New roads construction to gravel standards	Setting Out,bush clearing,Heavy grading with watering and compaction,Culvert Installation and Cleaning,Gravelling.
Moturumesi-Riabaka-Geteni-keboba-kiomonso-ereru TBC		Make the road passable in all weather seasons	New roads construction to gravel standards	Setting Out,bush clearing,Heavy grading with watering and compaction,Culvert Installation and Cleaning,Gravelling.
Gechona-Sengereri		Make the road passable in all weather seasons	New roads construction to gravel standards	Setting Out,bush clearing,Heavy grading with watering and compaction,Culvert Installation and Cleaning,Gravelling.
Keboba-Kiomoso Tbc		Make the road passable in all weather seasons	New roads construction to gravel standards	Setting Out,bush clearing,Heavy grading with watering and compaction,Culvert Installation and Cleaning,Gravelling.
Sengeri-nyamasebe-gechona-mariri-nyabigege		Make the road passable in all weather seasons	New roads construction to gravel standards	Setting Out,bush clearing,Heavy grading with watering and compaction,Culvert Installation and Cleaning,Gravelling.
Mariri-nyamaikairo-		Make the road passable in all weather seasons	New roads construction	Setting Out,bush clearing,Heavy grading with watering and compaction,Culvert Installation and

riamorefu TBC-gechona			to gravel standards	Cleaning,Gravelling.
Moturumesi-riopenda-ensoko-yopenda-bonyunyu TBC		Make the road passable in all weather seasons	New roads construction to gravel standards	Setting Out,bush clearing,Heavy grading with watering and compaction,Culvert Installation and Cleaning,Gravelling.
Riogato-riomare-nyamwanga		Make the road passable in all weather seasons	New roads construction to gravel standards	Setting Out,bush clearing,Heavy grading with watering and compaction,Culvert Installation and Cleaning,Gravelling.
Kebobo society girango primary-girango tbc		Make the road passable in all weather seasons	New roads construction to gravel standards	Setting Out,bush clearing,Heavy grading with watering and compaction,Culvert Installation and Cleaning,Gravelling.
Birongo junction – Geteni pry		Make the road passable in all weather seasons	New roads construction to gravel standards	Setting Out,bush clearing,Heavy grading with watering and compaction,Culvert Installation and Cleaning,Gravelling.
Omosagwera-rigoma sec		Make the road passable in all weather seasons	New roads construction to gravel standards	Setting Out,bush clearing,Heavy grading with watering and compaction,Culvert Installation and Cleaning,Gravelling.
Riogoro-botabori rd		Make the road passable in all weather seasons	New roads construction to gravel standards	Setting Out,bush clearing,Heavy grading with watering and compaction,Culvert Installation and Cleaning,Gravelling.
Riakiaka rd – riamchaga pry		Make the road passable in all weather seasons	New roads construction to gravel standards	Setting Out,bush clearing,Heavy grading with watering and compaction,Culvert Installation and Cleaning,Gravelling.
Miriri tbc-nyamakairo pry-riamorefu tbc		Make the road passable in all weather seasons	New roads construction to gravel standards	Setting Out,bush clearing,Heavy grading with watering and compaction,Culvert Installation and

				Cleaning,Gravelling.
Ekerenyo-Kiemumanyameko		Make the road passable in all weather seasons	New roads construction to gravel standards	Setting Out,bush clearing,Heavy grading with watering and compaction,Culvert Installation and Cleaning,Gravelling.
Ikonge market-Ikonge girls		Make the road passable in all weather seasons	New roads construction to gravel standards	Setting Out,bush clearing,Heavy grading with watering and compaction,Culvert Installation and Cleaning,Gravelling.
Kiamogake -obwari-kimonyenya		Make the road passable in all weather seasons	New roads construction to gravel standards	Setting Out,bush clearing,Heavy grading with watering and compaction,Culvert Installation and Cleaning,Gravelling.
Ekerenyo-nyairanganyameko		Make the road passable in all weather seasons	New roads construction to gravel standards	Setting Out,bush clearing,Heavy grading with watering and compaction,Culvert Installation and Cleaning,Gravelling.
Motabe-bogisero-bisembe		Make the road passable in all weather seasons	New roads construction to gravel standards	Setting Out,bush clearing,Heavy grading with watering and compaction,Culvert Installation and Cleaning,Gravelling.
Egetare-omorare pry		Make the road passable in all weather seasons	New roads construction to gravel standards	Setting Out,bush clearing,Heavy grading with watering and compaction,Culvert Installation and Cleaning,Gravelling.
Ekerenyo-kiamogake universitygekendo		Make the road passable in all weather seasons	New roads construction to gravel standards	Setting Out,bush clearing,Heavy grading with watering and compaction,Culvert Installation and Cleaning,Gravelling.
Ekegogi-nyangundo-heshima academy		Make the road passable in all weather seasons	New roads construction to gravel standards	Setting Out,bush clearing,Heavy grading with watering and compaction,Culvert Installation and Cleaning,Gravelling.

Nyageita-Ebate-iyuero		Make the road passable in all weather seasons	New roads construction to gravel standards	Setting Out,bush clearing,Heavy grading with watering and compaction,Culvert Installation and Cleaning,Gravelling.
Gekendo-Rianyamweno-Nyanderema		Make the road passable in all weather seasons	New roads construction to gravel standards	Setting Out,bush clearing,Heavy grading with watering and compaction,Culvert Installation and Cleaning,Gravelling.
Gesure -iyuero rd-iyabe nyairang'a		Make the road passable in all weather seasons	New roads construction to gravel standards	Setting Out,bush clearing,Heavy grading with watering and compaction,Culvert Installation and Cleaning,Gravelling.
Etangi-Nyansakia-riatinega-riamokambariongera-nyansakia Sda/Tbc-Mebeno Primary-riombati		Make the road passable in all weather seasons	New roads construction to gravel standards	Setting Out,bush clearing,Heavy grading with watering and compaction,Culvert Installation and Cleaning,Gravelling.
Kijauri-Etinga ya Kenya-Isoge		Make the road passable in all weather seasons	New roads construction to gravel standards	Setting Out,bush clearing,Heavy grading with watering and compaction,Culvert Installation and Cleaning,Gravelling.
Mecheo-matunwa-masese junction-Manga police-kineni-nderema-saigangiya		Make the road passable in all weather seasons	New roads construction to gravel standards	Setting Out,bush clearing,Heavy grading with watering and compaction,Culvert Installation and Cleaning,Gravelling.
Manga junction-riobare-riarati-esise pry-kerage junction-manga makutano shops		Make the road passable in all weather seasons	New roads construction to gravel standards	Setting Out,bush clearing,Heavy grading with watering and compaction,Culvert Installation and Cleaning,Gravelling.
Raitigo shops-ondara		Make the road passable in all weather seasons	New roads construction	Setting Out,bush clearing,Heavy grading with watering and compaction,Culvert Installation and

police posts-ekorongongo			to gravel standards	Cleaning,Gravelling.
Riangombe-rionganga-rianyagisera-mangariobare-riakati-mangagirls		Make the road passable in all weather seasons	New roads construction to gravel standards	Setting Out,bush clearing,Heavy grading with watering and compaction,Culvert Installation and Cleaning,Gravelling.
Kineni- Nderema		Make the road passable in all weather seasons	New roads construction to gravel standards	Setting Out,bush clearing,Heavy grading with watering and compaction,Culvert Installation and Cleaning,Gravelling.
Riamaroko- Saigangiya bridge- STU road- Memisi- KAHAWA Kebuse bridge- Magombo		Make the road passable in all weather seasons	New roads construction to gravel standards	Setting Out,bush clearing,Heavy grading with watering and compaction,Culvert Installation and Cleaning,Gravelling.
Mecheo Bridge		Make the road passable in all weather seasons	New roads construction to gravel standards	Setting Out,bush clearing,Heavy grading with watering and compaction,Culvert Installation and Cleaning,Gravelling.
Manga police- Rianyangeri B bridge- kineni-Nderema- Riontonyi- Isoge Health Centre- Iteumbe		Make the road passable in all weather seasons	New roads construction to gravel standards	Setting Out,bush clearing,Heavy grading with watering and compaction,Culvert Installation and Cleaning,Gravelling.
Nyabite-Nyangoso-bomondo-kebirigo		Make the road passable in all weather seasons	New roads construction to gravel standards	Setting Out,bush clearing,Heavy grading with watering and compaction,Culvert Installation and Cleaning,Gravelling.
Nyamache maya bridge		Make the road passable in all weather seasons	New roads construction to gravel standards	Setting Out,bush clearing,Heavy grading with watering and compaction,Culvert Installation and Cleaning,Gravelling.
KeRRA offices –junc		Make the road passable in all weather seasons	New roads construction	Setting Out,bush clearing,Heavy grading with watering

gov's offices			to gravel standards	and compaction,Culvert Installation and Cleaning,Gravelling.
Boflos-Juakali-Nyamira primary-Nyabite		Make the road passable in all weather seasons	New roads construction to gravel standards	Setting Out,bush clearing,Heavy grading with watering and compaction,Culvert Installation and Cleaning,Gravelling.
Gesore-Bundo		Make the road passable in all weather seasons	New roads construction to gravel standards	Setting Out,bush clearing,Heavy grading with watering and compaction,Culvert Installation and Cleaning,Gravelling.
Gesonso-Nyangoso		Make the road passable in all weather seasons	New roads construction to gravel standards	Setting Out,bush clearing,Heavy grading with watering and compaction,Culvert Installation and Cleaning,Gravelling.
Gesore junction-Bomondo		Make the road passable in all weather seasons	New roads construction to gravel standards	Setting Out,bush clearing,Heavy grading with watering and compaction,Culvert Installation and Cleaning,Gravelling.
Borabu county inn-Bundo		Make the road passable in all weather seasons	New roads construction to gravel standards	Setting Out,bush clearing,Heavy grading with watering and compaction,Culvert Installation and Cleaning,Gravelling.
Nyairicha-North Mugirango bridge		Make the road passable in all weather seasons	New roads construction to gravel standards	Setting Out,bush clearing,Heavy grading with watering and compaction,Culvert Installation and Cleaning,Gravelling.
Boflos –Almino academy		Make the road passable in all weather seasons	New roads construction to gravel standards	Setting Out,bush clearing,Heavy grading with watering and compaction,Culvert Installation and Cleaning,Gravelling.
Iabe-Geseneno		Make the road passable in all weather seasons	New roads construction to gravel standards	Setting Out,bush clearing,Heavy grading with watering and compaction,Culvert Installation and

				Cleaning,Gravelling.
Masosa-Bundo		Make the road passable in all weather seasons	New roads construction to gravel standards	Setting Out,bush clearing,Heavy grading with watering and compaction,Culvert Installation and Cleaning,Gravelling.
Nyamira works-Gesonso		Make the road passable in all weather seasons	New roads construction to gravel standards	Setting Out,bush clearing,Heavy grading with watering and compaction,Culvert Installation and Cleaning,Gravelling.
Tente –Bogichora		Make the road passable in all weather seasons	New roads construction to gravel standards	Setting Out,bush clearing,Heavy grading with watering and compaction,Culvert Installation and Cleaning,Gravelling.
Gesore-Kerobe		Make the road passable in all weather seasons	New roads construction to gravel standards	Setting Out,bush clearing,Heavy grading with watering and compaction,Culvert Installation and Cleaning,Gravelling.
Amakara-Nyandoche 11-corner CRiamanoti		Make the road passable in all weather seasons	New roads construction to gravel standards	Setting Out,bush clearing,Heavy grading with watering and compaction,Culvert Installation and Cleaning,Gravelling.
kijauri roche-riamokua-emasige		Make the road passable in all weather seasons	New roads construction to gravel standards	Setting Out,bush clearing,Heavy grading with watering and compaction,Culvert Installation and Cleaning,Gravelling.
Riomare-sauni academy-rigoko-Moraa mosongo		Make the road passable in all weather seasons	New roads construction to gravel standards	Setting Out,bush clearing,Heavy grading with watering and compaction,Culvert Installation and Cleaning,Gravelling.
Kijauri – Tinderet		Make the road passable in all weather seasons	New roads construction to gravel standards	Setting Out,bush clearing,Heavy grading with watering and compaction,Culvert Installation and Cleaning,Gravelling.

Engombe-Esagana-Rigoko		Make the road passable in all weather seasons	New roads construction to gravel standards	Setting Out,bush clearing,Heavy grading with watering and compaction,Culvert Installation and Cleaning,Gravelling.
Riamose- Nyasani-Ichuni TBC-Kenyere-Nyabiemba Nyansiongo-Borabu Sub county Head hq access road		Make the road passable in all weather seasons	New roads construction to gravel standards	Setting Out,bush clearing,Heavy grading with watering and compaction,Culvert Installation and Cleaning,Gravelling.
Riomare-Kenyere- Kekinga		Make the road passable in all weather seasons	New roads construction to gravel standards	Setting Out,bush clearing,Heavy grading with watering and compaction,Culvert Installation and Cleaning,Gravelling.
Riomokogoti-Nyabogonye pry-Metamaywa		Make the road passable in all weather seasons	New roads construction to gravel standards	Setting Out,bush clearing,Heavy grading with watering and compaction,Culvert Installation and Cleaning,Gravelling.
Masinge-Riokindo- Riensune		Make the road passable in all weather seasons	New roads construction to gravel standards	Setting Out,bush clearing,Heavy grading with watering and compaction,Culvert Installation and Cleaning,Gravelling.
Mekenene-Rinyonyi- Nyaronde		Make the road passable in all weather seasons	New roads construction to gravel standards	Setting Out,bush clearing,Heavy grading with watering and compaction,Culvert Installation and Cleaning,Gravelling.
Nyaronde-Riamanoti- Nyaronge		Make the road passable in all weather seasons	New roads construction to gravel standards	Setting Out,bush clearing,Heavy grading with watering and compaction,Culvert Installation and Cleaning,Gravelling.
Ombaso TBC-st.Andrews		Make the road passable in all weather seasons	New roads construction to gravel standards	Setting Out,bush clearing,Heavy grading with watering and compaction,Culvert Installation and Cleaning,Gravelling.

Kahawa boys-Oraini-Bwong'are		Make the road passable in all weather seasons	New roads construction to gravel standards	Setting Out,bush clearing,Heavy grading with watering and compaction,Culvert Installation and Cleaning,Gravelling.
Riyabe-Kenyere-Nyangori		Make the road passable in all weather seasons	New roads construction to gravel standards	Setting Out,bush clearing,Heavy grading with watering and compaction,Culvert Installation and Cleaning,Gravelling.
Keroka-Posta-Metamaywa		Make the road passable in all weather seasons	New roads construction to gravel standards	Setting Out,bush clearing,Heavy grading with watering and compaction,Culvert Installation and Cleaning,Gravelling.
Oteri kwa wote-Igwero		Make the road passable in all weather seasons	New roads construction to gravel standards	Setting Out,bush clearing,Heavy grading with watering and compaction,Culvert Installation and Cleaning,Gravelling.
Mochenwa mkt-Nyabogoye		Make the road passable in all weather seasons	New roads construction to gravel standards	Setting Out,bush clearing,Heavy grading with watering and compaction,Culvert Installation and Cleaning,Gravelling.
Nyankoba factory-nyanchonari-Rigoma		Make the road passable in all weather seasons	New roads construction to gravel standards	Setting Out,bush clearing,Heavy grading with watering and compaction,Culvert Installation and Cleaning,Gravelling.
S-Kona –Mochenwa		Make the road passable in all weather seasons	New roads construction to gravel standards	Setting Out,bush clearing,Heavy grading with watering and compaction,Culvert Installation and Cleaning,Gravelling.
Etangi-Riamoni-Igwero		Make the road passable in all weather seasons	New roads construction to gravel standards	Setting Out,bush clearing,Heavy grading with watering and compaction,Culvert Installation and Cleaning,Gravelling.
Keroka-kierira-Rikeny-4KM		Make the road passable in all weather seasons	New roads construction to gravel standards	Setting Out,bush clearing,Heavy grading with watering and compaction,Culvert Installation and

				Cleaning,Gravelling.
Nyansira-Igwero 3 km		Make the road passable in all weather seasons	New roads construction to gravel standards	Setting Out,bush clearing,Heavy grading with watering and compaction,Culvert Installation and Cleaning,Gravelling.
Riabuta-Mochenwa-4 km		Make the road passable in all weather seasons	New roads construction to gravel standards	Setting Out,bush clearing,Heavy grading with watering and compaction,Culvert Installation and Cleaning,Gravelling.
DCC's office- Magwero-3 km		Make the road passable in all weather seasons	New roads construction to gravel standards	Setting Out,bush clearing,Heavy grading with watering and compaction,Culvert Installation and Cleaning,Gravelling.
Esikona -embaro – matangi- keroka-4 Km		Make the road passable in all weather seasons	New roads construction to gravel standards	Setting Out,bush clearing,Heavy grading with watering and compaction,Culvert Installation and Cleaning,Gravelling.
D.C's office -Bocharia-1 ½ Km		Make the road passable in all weather seasons	New roads construction to gravel standards	Setting Out,bush clearing,Heavy grading with watering and compaction,Culvert Installation and Cleaning,Gravelling.
St. Augustus -Riomanga – Embaro		Make the road passable in all weather seasons	New roads construction to gravel standards	Setting Out,bush clearing,Heavy grading with watering and compaction,Culvert Installation and Cleaning,Gravelling.

2.9.2 Public Works sub-sector:

i) On-going projects/programmes.

Project Name/ Location	Objectives	Targets	Description of activities
Ino. Footbridge At Bitundugusi, Manga S/county	-To connect all major public facilities (trading centres, health centres & secondary schools) -To enhance disaster recovery system	-Completion of the bridge within a period less than one financial years	Procure;(-setting out,excavations,concrete frame works,fabricating the steel bridge structure and soffits) Commisioning and Handing over
Proposed 1no. Footbridge At Nyageita Rogoro ,Borabu Sub- county.	-To connect all major public facilities (trading centres, health centres & secondary schools) -To enhance disaster recovery system	Completion of the bridge within a period less than one financial years	Procure;(-setting out,excavations,concrete frame works,fabricating the steel bridge structure and soffits) Commisioning and Handing over
Proposed 2No. Cluster. Footbridges At 1)Rianyamesa 2)Riamonyancha	To connect all major public facilities (trading centres, health centres & secondary schools) To enhance disaster recovery system	Completion of the bridge within a period less than two financial years	Procure;(-setting out,excavations,concrete frame works,fabricating the steel bridge structure and soffits) Commisioning and Handing over
Proposed Extension of Existing Nyamira PWD Offices to increase office and storage Accommodation	Provide adequate working space to improve service delivery	Completion of the extensions within a period less than one financial years	procure; (setting out,excavations,substructure works,superstructure works,finishes and building services)Commisioning and Handing over
Proposed Construction of Gate House,Canopied Gate and Adjoining Perimeter Fence at Public Works Headquarters in Nyamira	Enhance security for facilities accommodated in the headquarters	Completion of the extensions within a period less than one financial years	-Soliciting of funds -Tender documentation -Tender action/Procurement -Contract administration

Project Name/ Location	Objectives	Targets	Description of activities
			-Commisioning and Handing over
Proposed Refurbishment Works to the Nyamira Public Works Offices to accommodate The CME for the Ministry of Transport,Roads and Infrastructure.	Ministry of Transport, Roads and Infrastructure Premises in Nyamira	-Soliciting of funds -Tender documentation -Tender action/Procurement -Contract administration -Commisioning and Handing over	On-going
Riamaemba bridge	To connect all major public facilities (trading centres, health centres & secondary schools) and other facilities/households, primary schools, churches	Completion of the bridge within a period less than one financial year.	Procure;(-setting out,excavations,concrete frame works,fabricating the steel bridge structure and soffits) Commisioning and Handing over

ii) stalled/terminated projects/programmes

Project Name/ Location	Objectives	Targets	Description of activities
Proposed Completion of the Nyamira PWD Director's Residence in Nyamira	Provide adequate Residential accommodation to improve service delivery and staff motivation	-Complete the house within one financial year	Tender documentation, action/Procurement, administration, Commisioning and Handing over

Project Name/ Location	Objectives	Targets	Description of activities
Ribwago- Riensune foot bridge	Ensure pasability in all seasons	The stated bridgepoints	Tender documentation, action/Procurement, administration, Commisioning and Handing over
Riamainga Bridge	Ensure pasability in all seasons	The stated bridgepoints	Tender documentation, action/Procurement, administration, Commisioning and Handing over
Riagesengi bridge	Ensure passability in all seasons	The stated bridgepoints	Tender documentation, action/Procurement, administration, Commisioning and Handing over

iii) New project/programme proposals.

Project Name/programme Location	Objectives	Targets	Description of activities
Proposed construction of 12No. 1BR residential units for support staff accommodation in Nyam ira	Provide adequate Residential accommodation to improve service delivery and staff motivation	Completion of the 12 staff units within a period less than two financial years	-Soliciting of funds . Tender documentation -Tender action/Procurement -Contract administration -Commisioning and Handing over

Project Name/programme Location	Objectives	Targets	Description of activities
Proposed Residential Flats For Ministry Staff At Rangenyo	Provide adequate Residential accommodation to improve service delivery and staff motivation	Completion of the staff units within a period less than two financial years	Soliciting of funds . Tender documentation -Tender action/Procurement -Contract administration -Commissioning and Handing over
Proposed perimeter fencing works to the Nyamira PWD/KERRA Headquarters.	Enhance security for facilities accommodated in the headquarters	Completion of the fencing works within a period less than one financial years	-Soliciting of funds Tender documentation -Tender action/Procurement -Contract administration -Commissioning and Handing over
Proposed construction of a new 12 No. parking lots at Nyamira PWD Offices and	-Provide adequate working space to improve service delivery -Enhance security for facilities accommodated in the headquarters	Completion of the parking lots and civil works within a period less than one financial years	-Soliciting of funds . Tender documentation -Tender action/Procurement -Contract administration -Commissioning and Handing over
Internal Road works/Civil Works within the Nyamira PWD/KERRA Premises	Provide adequate working space to improve service delivery	Completion of the civil works within a period less than one financial	Soliciting of funds . Tender documentation

Project Name/programme Location	Objectives	Targets	Description of activities
	-Enhance security for facilities accommodated in the headquarters	years	-Tender action/Procurement -Contract administration -Commisioning and Handing over
Proposed construction a staff quatters at Manga MOPW compound.	Provide adequate Residential accommodation to improve service delivery and staff motivation	Completion of the fencing works within a period less than two financial years	-Soliciting of funds -Tender documentation -Tender action/Procurement -Contract administration -Commisioning and Handing over
Propose construction of Materials Laboratory at Nyamira MOPW compound.	To establish a centre of technical education excellence for research & development and quality control of building materials and workmanship.	Completion and equipping of the Materials Laboratory within a period less than two financial years	-Soliciting of funds -Tender documentation -Tender action/Procurement -Contract administration -Commisioning and Handing over
Proposed Construction of a Training college for Buildings and Highways Construction at Magombo.	To establish a centre of technical education excellence for research & development and quality control of building materials and workmanship.	Completion and equipping of the Materials Training College within a period less than two financial years	-Soliciting of funds -Tender documentation -Tender action/Procurement -Contract administration

Project Name/programme Location	Objectives	Targets	Description of activities
			-Commisioning and Handing over
Proposed footbridge at Nyabite-Bobembe	To connect all major public facilities (trading centres, health centres & secondary schools) and other facilities/households, primary schools, churches, mosques, Tea Buying centres, and Administrative facilities -To enhance disaster recovery system.	Completion of the bridge within a period less than two financial years	Soliciting of funds -Tender documentation -Tender action/Procurement -Contract administration -Commisioning and Handing over -Maitain the structures
Project Name/programme Location	Targets	Description of activities	
Edipo foot bridge	Completion of the bridge	Procure, construct, Commisioning and Handing over	
riamwenja foot bridge	Completion of the bridge	Procure, construct, Commisioning and Handing over	

Project Name/programme Location	Objectives	Targets	Description of activities
Riakongo foot bridge	Completion of the bridge		Procure, construct, Commissioning and Handing over
kowidi foot bridge	Completion of the bridge		Procure, construct, Commissioning and Handing over
Boera foot bridge	Completion of the bridge		Procure, construct, Commissioning and Handing over
rianari foot bridge	Completion of the bridge		Procure, construct, Commissioning and Handing over
Riondiba foot bridge	Completion of the bridge		Procure, construct, Commissioning and Handing over
ekebariga foot bridge	Completion of the bridge		Procure, construct, Commissioning and Handing over
Nyambiri foot bridge	Completion of the bridge		Procure, construct, Commissioning and Handing over
Rinyoni foot bridge	Completion of the bridge		Procure, construct, Commissioning and Handing over
Nyandoche II dispensary foot	Completion of the bridge		Procure, construct, Commissioning and Handing over

Project Name/programme	Objectives	Targets	Description of activities
Location			
bridge			
Riamokogoti foot bridge	Completion of the bridge		Procure, construct, Commissioning and Handing over
Riomare foot bridge	Completion of the bridge		Procure, construct, Commissioning and Handing over
Kekinga foot bridge	Completion of the bridge		Procure, construct, Commissioning and Handing over
Rigoko foot bridge	Completion of the bridge		Procure, construct, Commissioning and Handing over
Project Name/programme	Targets		Description of activities
Location			
Riongeri – egasagane bridge	Completion of the bridge		Procure, construct, Commissioning and Handing over
Nyaronde bridge	Completion of the bridge		Procure, construct, Commissioning and Handing over
Riamogoti (expansion)	Completion of the bridge		Procure, construct, Commissioning and Handing over

Project Name/programme Location	Objectives	Targets	Description of activities
Rigoko bridge	Completion of the bridge		Procure, construct, Commissioning and Handing over
Bus park at Nyansiongo town	Completion of the bridge		Procure, construct, Commissioning and Handing over
Society bridge	Completion of the bridge		Procure, construct, Commissioning and Handing over
Ontimbu bridge	Completion of the bridge		Procure, construct, Commissioning and Handing over
Nyanchoka bridge	Completion of the bridge		Procure, construct, Commissioning and Handing over
Isamwera bridge	Completion of the bridge		Procure, construct, Commissioning and Handing over
Nyarombe bridge	Completion of the bridge		Procure, construct, Commissioning and Handing over
Monsore bridge	Completion of the bridge		Procure, construct, Commissioning and Handing over
Riomwenga-Kiruanda-Nyagachi	Completion of the bridge		Procure, construct, Commissioning and Handing over

Project Name/programme	Objectives	Targets	Description of activities
Location			
bridge			
Boisabi-Bosagara-Tombe	Completion of the bridge		Procure, construct, Commissioning and Handing over
Itibo dip-Nyagokiani	Completion of the bridge		Procure, construct, Commissioning and Handing over
Nyamideho	Completion of the bridge		Procure, construct, Commissioning and Handing over
Nyangoso	Completion of the bridge		Procure, construct, Commissioning and Handing over
Eaka	Completion of the bridge		Procure, construct, Commissioning and Handing over
mabariri,	Completion of the bridge		Procure, construct, Commissioning and Handing over
Entono	Completion of the bridge		Procure, construct, Commissioning and Handing over
Riamogaka	Completion of the bridge		Procure, construct, Commissioning and Handing over

Project Name/programme Location	Objectives	Targets	Description of activities
Omokonge	Completion of the bridge		Procure, construct, Commissioning and Handing over
Ongera	Completion of the bridge		Procure, construct, Commissioning and Handing over
Sakwa	Completion of the bridge		Procure, construct, Commissioning and Handing over

CHAPTER THREE

3.0 STRATEGIC MODEL

3.1 Introduction

This chapter discusses the key issues that the ministry has identified and which it needs to address in order to effectively achieve its mission while also providing the leadership required to accelerate the realisation of first CIDP and second MTP aspirations of the Kenya vision 2030. The strategic objectives and strategies to be pursued in addressing the issues are also presented. The chapter lastly discusses the cross cutting issues affecting the department.

3.2 Mandate

The mandate of the Department of Transportation and Works includes responsibly for the administration, supervision, control, regulation, management and direction of all matters relating transportation and public works.

3.3 Vision

The Department of Transport, Roads and Public Works envisages “a county with reliable transport system and state of the art public works for improved quality of life”.

3.4 Mission Statement

It is committed in providing efficient and high quality transport system, roads infrastructure and public works through environmental friendly and cost-effective construction, maintenance and management for socio-economic development.

3.5 Core Values

The Department of Transport, Roads and Public Works of Nyamira County has anchored its foundation on citizen service delivery and collective action with a strong focus on improved quality of life. The Departments aspires to attain excellence in service delivery as inspired by variety of actions as indicated in our core values listed here under:

- 1) **Customer focus:** Our department strives to respond and meet clients’ needs in an objective manner.
- 2) **Creativity and innovativeness:** Encourage and promote creativity in providing solutions to Transport, Roads and Public Works development challenges.
- 3) **Professionalism and timeliness:** Equip our expertise with ideal skills, knowledge, methods and character to enhance effectiveness and efficiency in service delivery.
- 4) **Partnership:** Collaborate with development partners and the public in mobilizing resources and implementing projects/programmes.

- 5) **Transparency and accountability:** Engrain openness in service delivery and resource utilization.
- 6) **Team spirit:** Our department will ensure staffs are motivated to work together.
- 7) **Integrity:** Instill moral soundness while serving public.

3.6 Strategic Goals

Roads:

- a) Enhance quality of motorable, all weather roads and increase the coverage of paved roads across the county
- b) Open up new access roads in the national road network as provided by Kenya Roads Board

Transport:

- a) Continuously improve and maintain safety of all transport systems across the county
- b) Acquire modern equipment and machinery for construction and maintenance

Public works:

- a) Increase stock of government offices and refurbish existing public works
- b) Continuously improve and modernize public works facilities

Institutional Capacity

- a) Increase staff numbers and professional capacity to enhance performance
- b) Establish complete new office units for the department of roads, transport and public works

3.4 Strategic Objectives

Roads:

- a) To upgrade existing roads
- b) To open new access roads and maintain existing rural roads

Transport:

- a) To develop a transport policy/legislation and ensure full enforcement of road safety rules and regulations
- b) To ensure timely and accurate inspection of machines and vehicles
- c) To cooperate with Kenya airport authority to develop facilities for air transport in the county
- d) To purchase machines and equipment for the departments

Public works:

- a) To build new public works such as new buildings, civil works and building services
- b) To demolish, refurbish ,rehabilitate and redesign public works

Institutional capacity:

- a) To attract and retain new staff and build capacity of existing ones to improve their performance
- b) To improve working environment for staff through provision of suitable office, equipment of improvement of terms of service

3.5 Cross Cutting Issues

i. Equity (inclusiveness)

The lack of involvement and consideration of the views of the public has led to unsustainability of the initiatives implemented since the communities at large were not involved in the decision making processes. The constitution currently provides for the inclusion of the disabled and marginalized and ensures public participation is exercised in all ventures.

ii. Alcohol, drug and substance abuse

The misuse of alcohol and abuse of drugs has reduced effectiveness of the staff and led to inability to achieve the set targets.

iii. Information and Communication Technology (ICT)

The limited access and availability of the ICT facilities hampers development in the county by reducing the effectiveness and efficiency in fulfilling the department's mandate. The lack of appropriate modern programmes in design of roads and buildings sectors creates an impediment to development as a result of over reliance on manual technology and outdated softwares.

iv. Environmental and climate change.

Increase in population has put immense pressure on the natural resources leading to degradation of the ecosystem balance. Climate changes whose impacts are aggravated by human activities have adverse effect on the environment and the livelihoods of a people. The impact hampers development by causing a strain in access to raw materials, poses a risk to food security and is a increases conflicts among communities.

v. Machinery

Due to increased road construction and opening more rural access roads the department lacks machine to facilitates in its construction works.

vi. HIV/AIDS

HIV/AIDS continues to pose amajor challenge to all sectors of the economy and is affecting the development programmes in the county. Its prevalence rate in Nyamira County is 6.9% (Nascop, County HIV Profiles 2012). HIV/AID pandemic has impacted negatively on the productivity of the work force that is either infected or affected thus affecting service delivery and business operations.

3.4 Strategic Indicators and Logical Formwork

<i>Goal 1: Enhance quality of motorable, all weather roads and increase the coverage of paved roads across the county</i>					
Objectives	Activities	Objectively verifiable indicators	Means of verification	Assumptions	Probable partners/actors
1. To upgrade existing roads	Survey; design; setting out; bush clearing; top soil stripping; earthworks; sub base: base; stabilization Priming & surface dressing	Length of road upgraded(Km)	Maps Drawings Tender documents; Pre-tender site visits Completion certificate	Funds available, favorable weather Adherence to work programme Designing & Procuring the works	KTDA, CDF, NEMA, KeRRA & KeNHA
<i>Goal 2: Open up new access roads in the national road network as provided by Kenya Roads Board</i>					
2.1 To open up new access roads and maintain existing rural roads	Survey areas to be opened up Tender action Bush clearing, heavy grading , compaction, and gravelling	The number of new access and feeder roads created	Engineer progress reports and site meeting minutes, completion certificate	Funds available Cooperation from the public	KeRRA, CDF and the community
<i>Goal 3: Continuously improve and maintain safety of all transport systems across the county</i>					
3.1 To develop a transport policy/legislation and ensure full enforcement of road safety rules and regulations	Identify and propose transport policy issues Liaise with traffic police in enforcement	Number of transport policies legislations developed Extent of enforcement	Transport policy documents Number of meeting held with key partners	Cooperation from the public and enforcing agencies Cooperation from transport providers	County assembly Traffic police PSV Saccos

3.2 To ensure timely and accurate inspection of machines and vehicles	Development of machine and motor vehicle register Development of inspection facilities and workshops Routine inspections of machines and motor vehicle	The number of machines and motor vehicles inspected	Machinery and motor vehicle register Inspection reports	Maximum cooperation from other departments	County government Departments
3.3 To cooperate with National infrastructure and transport Department as well as Kenya airport authority to develop facilities for air transport in the county	Siting and designing Tendering and Construction	Existence of air strip	Engineers report	Availability of funds to undertake the project Approval by National Transport Development	Kenya airport authority, National development of transport and infrastructure
<i>Goal 4: Acquire modern equipment and machinery for construction and maintenance</i>					
4.1 To purchase machines and equipment for the departments	Procurement of machines and equipment	Number of machines and equipment purchased	Procurement records	Availability of funds	Procurement department Department of Finance

Goal 5: Increase stock of government buildings and refurbish existing public works					
5.1 To build new public works such as new buildings, civil works and building services	Receiving briefs from clients/ user Departments Developing designs as per briefs Preparing bill of quantities Tender action Supervising works Handing over back works to clients Preparation of final account	The number of new public works completed	Handing over certificate Certificate of practical completion Certificate of making good defects Release of performance and retention	Continuous flow of funds Capacity to undertake quality supervision Consistency of contractors performance	National Construction Authority NEMA Department of Physical Planning, Lands and Surveys Client ministries Construction professional bodies Donors National government
Goal 6: Continuously improve and modernize public works facilities					
6.1 To demolish, refurbish, rehabilitate and redesign public buildings and works	Receiving briefs from clients Developing designs as per briefs Preparing bill of quantities Tendering Supervising works	Number of facilities demolished, redesigned refurbished, rehabilitated	Relevant project management reports	Continuous flow of funds Cooperation from public	National Construction Authority NEMA Department of Physical Planning, Lands and Surveys Client ministries

Goal 7: Increase staff numbers and professional capacity to enhance performance					
7.1 To attract and retain new staff and build capacity of existing ones to improve their performance	Recruitment of suitable staff Trainings	Schemes of service and progression Number recruited/deployed Number trained Extent of improvement in service delivery	Letters of appointment Certificates of award for training Service level agreement	Availability of funds for employment and training Willingness to participate in training opportunities Existence of training institutions	Public service Board Kenya school of Government Higher learning institutions Relevant professional bodies Donors (JICA)
Goal 8: Establish complete new office units for the department of roads, transport and public works					
8.1 To improve working environment for staff through improvement of Work environment	Acquire adequate and modern ICT hardware and software Increase office space availability	Number and quality of equipment procured Quantity of office space development	Asset/equipment inventory Reports on office expansion	Availability of funds to develop and purchase office equipments	Procurement Department National government

CHAPTER FOUR : IMPLEMENTATION OF THE STRATEGIC PLAN

4.1 Introduction

The implementation of this Strategic Plan will require the full involvement, effort, commitment and leadership from the ministry staff and all the stakeholders. It will require that the resource mobilization is focused on the achievement of the objectives laid out in the plan. The following matrix details the implementation of the identified issues in the ministry.

4.2 Strategic Implementation matrix

STRATEGIC ISSUES 1Provide conducive working environment for the department personnel														
OBJECTIVES: 1.1 To increase office accommodation														
STARTETGIES	ACTIVITIES	indicators	target	Target per year.m ²					Budget per year(ksh m)					Responsibility
				1	2	3	4	5	1	2	3	4	5	
Refurbish and rehabilitate existing offices space & storage facilities	Design, cost ,tender and supervise	Number of offices rehabilitated	1000m ² office space	200	200	200	200	200	3	3	3	3	3	CO
Construct new offices	Design, cost ,tender and supervise	Number of offices construction	1000m ² office space	200	200	200	200	200	7	7	7	7	7	CO
Construct perimeter walls in department compound &yards	Design, cost ,tender and supervise	Number of compounds & yards enclosed	10 acres	2	2	2	2	2	1.5	1.5	1.5	1.5	1.5	CO

STRATEGIC ISSUES 2 Increase staff numbers and professional capacity to enhance performance														
OBJECTIVES: Increase and train existing staff														
Employ more technical staff	Advertise, interview & remunerate	Number of staff employed Performance contracts	55	5	20	10	10	10	1.8	9	12.6	16.2	19.8	
Offer further training to existing staff	Recommend staff for staff for staining Pay for the training	Number of staff trained Improved performance contracts outcome	8		2	2	2	2		0.5	0.5	0.5	0.5	
Motivate existing staff	Awards, promotions	Number of staff awarded & promoted	5	1	1	1	1	1		0.1	0.1	0.1	0.1	
STRATEGIC ISSUES 3 Leveraging on Information Communication Technology														
OBJECTIVES: Leverage the Department's operations on ICT for increased efficiency in service delivery														
Enhance the Department 's ICT capacity	Carry out study on equipment/software requirement	Study report	1							0.05				
	procure the required equipment/software	NO of assorted items procured	100%		40%	20%	20%	20%		2	1	1	1	
	Carry out study on ICT training needs and undertake the training	NO of officers trained	100%		40%	20%	20%	20%		0.4	0.2	0.2	0.2	

Strategy issue 4	Infrastructure Development														
Strategic objective 4.1	Increase the quantity and quality of various infrastructure in the county through financial and technical support to department														
STRATEGY	ACTIVITY	KEY INDICATOR	TARGET FOR 5 YEARS	TARGET PER YEAR					BUDGET PER YEAR (KSHS.M)					RESP.	
				1	2	3	4	5	1	2	3	4	5		
Enhance Department 's capacity for Disaster Management	Recruit Fire Officers for all Municipalities and major towns	NO. of Officers	5	1	1	1	1	1	0.24	0.48	0.72	0.96	1.2	CO	
	Train Department staff as TOTs on Disaster Management and	NO. of Officers	100%	20%	20%	20%	20%	20%	0.1	0.1	0.1	0.1	0.1		
	Procure Fire Fighting Equipment (Foam tenders or Search and Rescue Vehicles and necessary protective gear)	NO. of units	5	1	1	1	1	1	15	15	15	15	15	CO	
	Train Department Fire Crews on use of equipment	NO. of Crews	5	1	1	1	1	1	0.05	0.05	0.05	0.05	0.05	CO	
Strategic Objective: 4.2 Increase financial and technical support to Departmental in Infrastructure development															
Improve linkage to human settlements and development	Construct new footbridges	NO. of footbridges constructed	20		5	5	5	5	40	40	40	40	40	CO	
Improvement of terminal transport facilities (Bus parks and markets) in urban	Construct Bus Parks in major town centres in the county	Bus Parks constructed	10	1	4	2	2	1	35	140	35	35	35	CO	
	Rehabilitation and development of bus parks, bays and walk ways	Number of bus parks,bays and walkways rehabilitated and developed	5	1	2	1	1	1	10	20	10	10	10	CO	
Enhance quality of motorable, all weather roads and increase the coverage of Gravel roads across the county infrastructure	Opening New Access Roads and maintenance of Existing roads & upgrading urban backstreets	Roads opened & rehabilitated	NO. of KM	200	40	40	40	40	200	300	400	400	400	CO	
	Emergency works	NO. of emergency works completed							15	15	15	15	15	CO	
To enhance timely and cheap maintenace and construction of roads	Purchase of vehicle, equipment and machinery	NO. of machines and equipment purchased	30	8	10	5	5	2	110	100	50	50	20	CO	

Preside over the governor field functions	Fabricate, maintain and coordinate governor Dias for field functions	NO. of Dias fabricated & maintained	2	1	1					3	3				CO
Strategic Issue 5	Coordination of Departmental directorates and Directorates Planning														
Strategic Objective	Improve standards of planning in Department														
Support Department to Develop sub county Management Plans	Prepare Integrated Strategic Development Plans	Plans	1	1						0.5					
	Prepare Integrated departmental work plans and budget plans	Plans	5	1	1	1	1	1	0.2	0.2	0.2	0.2	0.2	CO	
	Grand Total														

4.3 Financial Resource Mobilization

4.3.1 Financial Requirements by Directorate over the Plan Period

S/NO.	Directorate	Budget KSh. Million					
		2013/14	2014/15	2015/16	2016/17	2017/18	Total
1	Transport	45	160	45	45	45	
2	Roads	325	415	465	465	435	
3	Public works	11.5	69.99	70.21	68.19	67.95	
4	Administration	1.8	12.5	14.6	18	21.6	

4.4 Human Resources

To achieve the plan objectives, the ministry will require human resources with various skill levels as follows.

Administration

Office	JG	No Required	In post	Variance
Executive Committee Member (ECM)	'T'	1	1	0
Chief Office(CO)	'S'	1	1	0
P.A to ECM	' L' to 'M'	1	0	1
Secretary to ECM & CO	' H' to 'J'	2	1	1
Departmental Accountant	' K' to 'N'	1	0	1
Accounting clerk	' J' to 'L'	2	0	2
Clerical Officers	' H' to 'J'	2	0	2
Messengers		2	2	0
Drivers		8	7	1

County works Architectural Services Directorate

Officer	JG	No required	In post	variance
Director /Deputy Director	'P' to 'R'	1	0	1
County architect	' M' to 'N'	1	1	0
County quantity surveyor (CQS)	' M' to 'N'	1	1	0
Inspector (building)	H' to 'J'	5	1	4

Inspector (Electrical)	H' to 'J'	3	1	2
Inspector (mechanical)	H' to 'J'	3	0	3
Quantity survey assistants	'H' to 'J'	5	0	5
Architectural assistant	H' to 'J'	2	1	1
Secretary to Director		1	0	1
Secretary to county Architecture		1	0	1
Secretary to CQS		3	0	3

County Roads and Engineering Services Directorate

Officer	JG	No. required	In post	variance
Director	'R'	1	0	1
Deputy Director	'P' to 'Q'	1	0	1
County Roads and structural Engineer	'M' to 'N'	1	1	0
County Electrical Engineer	'M' to 'N'	1	0	1
County mechanical Engineer	'M' to 'N'	1	0	1
County Roads Officers	- to 'L'	5	0	1
County Structural Engineer Assistant		1	0	1
County Roads Overseers		5	0	5
Fire Officer	'J' to 'K'	1	0	1
Secretary to Director/ Deputy Director		1	0	1
Secretary to roads Engineer		1	0	1
Secretary to Electrical & Mechanical Engineers		1	0	1

County Mechanical & Transport Division

Officer	JG	No. Required	In post	variance
Director	'R'	1	0	1
Deputy Director	'P' to 'Q'	1	0	1
Transport & Mechanical Engineer	'M' to 'N'	1	0	1
Transport and Mechanical Officer;	'H' to			1
• Mechanical		4	0	
• Electrical	'H' to	2	0	1
Secretary to the Director/Deputy Director		1	0	1
Secretary to Engineer		1	0	1
Tipper Drivers		2	0	2
Plant operators		12	0	12

The positive variances in the table indicate that all departments are under-established particularly in the areas of technical staff. There are also conspicuous anomalies where an entire department has only the Head of Department in place. It is therefore important that human resource issues be addressed with a view to coming up with long-term self-sustaining measures by undertaking the following:

- Carry out a workload analysis to establish optimal staffing levels for all cadres with a view to reviewing the authorized staff establishment for the Department Headquarters
- Develop of a Human Resource Strategy for Department to support the proposed department Agenda
- Deal with succession management challenges in the Ministry
- Invest in skills development for all staff
- Invest in providing staff with appropriate working tools
- Raise staff morale by initiating staff welfare programs

4.6 IMPLEMENTATION STRATEGY

To effectively coordinate the Departmental programs and projects and undertake reforms in line with the ongoing Public Sector Reforms initiatives, there is need to reorganize the current structure to introduce clear reporting channels and provide for synergy between all organs of the Department. The proposed changes are graphically represented in the following organization structure. Although there are no major changes in the current structure, the departmental directorates are well defined which in the past has been not included in the organization chart. It is imperative that these units be operationalized by recruiting competent staff to head them. (*See proposed departmental Organogram*).

They are currently executed through Three Directorates namely the Transport, Roads and Engineering Services and Architectural and Public works. At the administration levels, the ministry has Executive committee member and the chief officer providing supervisory and co-ordination services.

4.6.1 EXECUTIVE COMMITTEE MEMBER

- (a) Responsible to the County Governor for the proper organization and administration of the department for effective service delivery in planning and development of roads, bus parks and public works.
- (b) Responsible to the Governor for formulation of policy touching on:-
 - County Roads and foot bridges development and maintenance and regulation of their use
 - Bus parks development street lighting and regulation of their use
 - Acquisition, maintenance and disposal of County Government vehicles, roads development equipment, plant and other electromechanical equipment (e.g. generators)
 - Storm water disposal in urban areas.
 - Other modes of transport e.g. non-motorized transport.
 - Development and maintenance of public buildings and urban development
- (c) Serves as a Cabinet Member in the Executive Arm of the County Government.
- (d) Responsible to the Governor in respect of any other official assignments that may be assigned by Governor.

4.6.2 COUNTY DEPARTMENTAL CHIEF OFFICER

- (a) Responsible to the E.C.M. for the following:-
 - Development of an effective departmental Human Resource for efficient and effective service delivery to the County through training and use of appropriate results oriented tools;
 - Proper planning and implementation of development of activities in the areas of County roads, public works, public bus and car parks, as well as street lighting.
 - Proper utilization of County resources both financial and material as the Departmental Accounting officer
 - The Chief Officer shall also be responsible in assisting the ECM develop policies touching on development, maintenance and use of roads , foot bridges, bus and car parks in Urban areas in the County as well as public buildings development and maintenance.

- Management of County departmental Human Resources in respect of deployment, discipline and promotions.
- The holder of this office shall serve on contract.

4.6.3 COUNTY DIRECTOR TRANSPORT

This shall be the technical head for the County responsible to the Chief Officer. The County Director of Transport is responsible for ensuring that all functional areas and spheres of government undertake transport planning in a seamlessly integrated way underpinned by core principles articulated in the County Strategic Planning Framework to guide all transport planning effort in the county. The director will be assisted by deputy director and mechanical engineer for provision of the following engineering services:-

- County works electromechanical services
- County Mechanical and Transport services.

4.6.4 COUNTY DIRECTOR OF ROADS AND ENGINEERING SERVICES

(a) This shall be the technical head for the County responsible to the Chief officer for provision of the following engineering services:-

- County Roads design, construction and maintenance.
- Civil and structural design services for County Public Works including foot bridges and buildings.
- County works electromechanical services
- Storm water after drainage in urban areas.
- Street lighting design in urban areas

(b) The County Director of Roads and Engineering Services shall be responsible to the Chief Officer in development of policy relating to the functions listed in (a) above.

(c) Implementation of public road transport policy within the county

(d) Responsible for efficient management of Human Resources working under the directorate, namely County Civil/Structural Engineer, County Electrical Engineer (Building Services) and County Mechanical Engineer, (Building Services) The holder of this office shall serve on a Permanent and Pensionable basis on Job Group

4.6.5 THE COUNTY DIRECTOR OF ARCHITECTURE AND PUBLIC WORKS

(a) The County Director of Architecture and Public Works is responsible to the Chief Officer for the provision of the following technical services:-

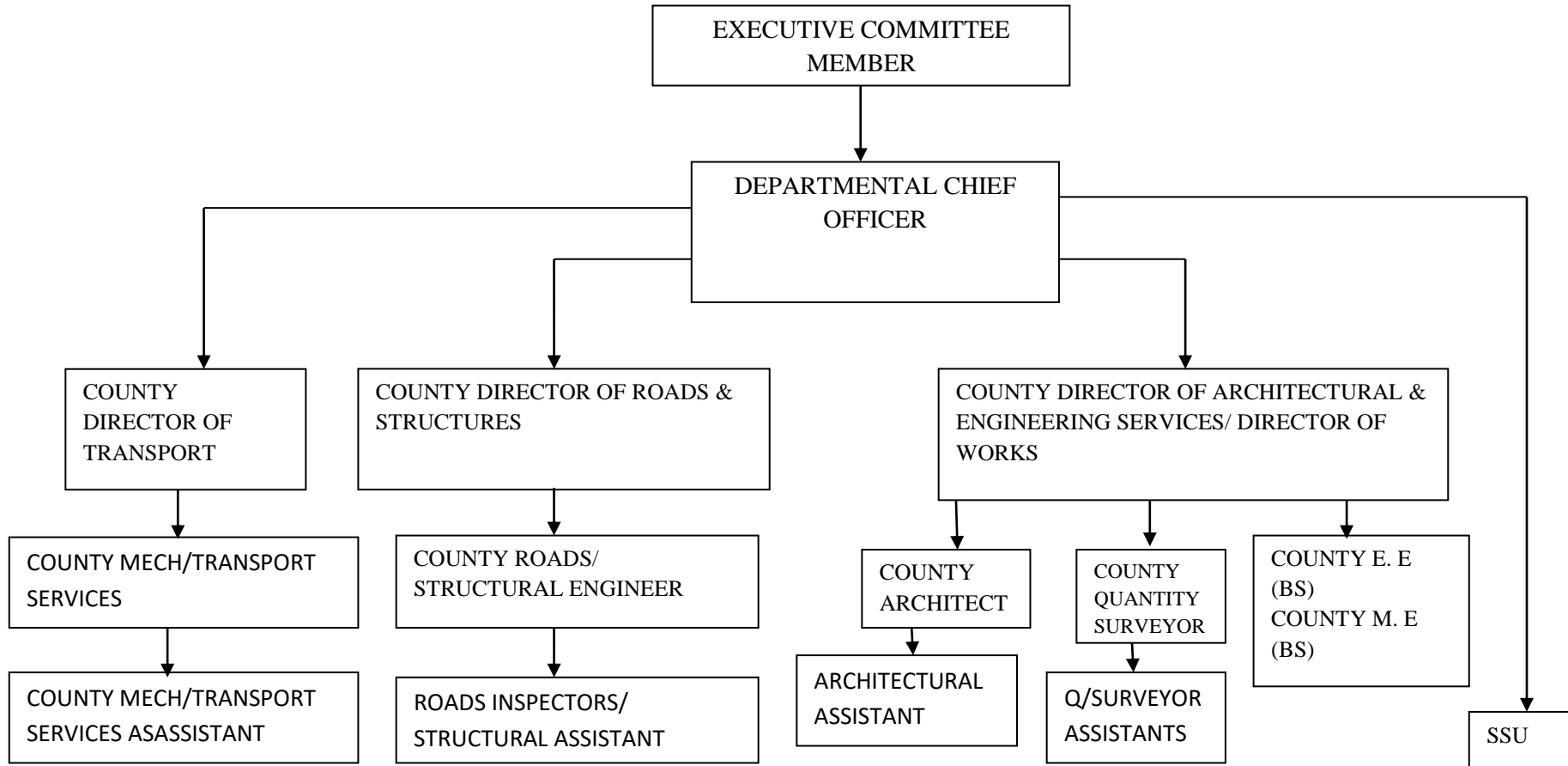
- Public Works Architectural planning
- County Public Works Quantity Surveying and Contracts documentation services.
- County Public Works development coordination and inspection services (i.e. Project management and Clerk of Works services).
- In liaison with the County Director of Engineering Services, incorporate the input of building engineering services in County Works development.
- Responsible for efficient management of Human Resources working under the directorate viz
 - (i) County Architectural Unit, headed by the County Architect
 - (ii) County Quantity Surveying Unit, headed by the County Quantity Surveyor.
 - (iii) County Works Inspection Unit, headed by County Clerk of Works.

4.6.6 SUPPORT SERVICES UNIT

Support services unit shall be having the following services:-?

- (a) Accounting services
- (b) Procurement services
- (c) Security of Government Premises and Installations services
- (d) Messengerial services
- (e) Secretarial services
- (f) Human Resource Management
- (g) Drivers
- (h) Government records/Registries staff
- (i) Inventory services
 - Government properties records
 - Registration of all government buildings in the county.

4.7 Proposed Departmental Organogram



N/B: See Appendix 'A' for complete staff details

CHAPTER FIVE: MONITORING, EVALUATION AND REPORTING

5.1 Monitoring & Evaluation Framework

The successful implementation of the plan and achievement of the objectives requires Sourcing and deploying the requisite resources and putting in place adequate M & E framework among others. The following M & E framework will be adopted in order to ensure successful implementation of the strategic plan:

- i. An M & E team comprising of the Executive Committee Member and the heads of divisions and departments will be established to champion implementation of the strategic plan.
- ii. The M & E team will hold regular meetings, chaired by the Executive Committee Member to review the status of the strategic plan implementation as it relates to their respective sections/departments. In addition, areas requiring strategy change will be identified.
- iii. The M & E team will be reporting regularly (quarterly) to Chief Officer as progress is made towards the attainment of the objectives.
- iv. The strategic plan will be reviewed annually to ensure that necessary changes in the objectives, strategy and activities (informed by new information regarding the Department or the environment) are effected. The implementation plan will provide guidance on objective review of the progress of the strategic plan implementation.
- v. The Balanced Scorecard will be adopted as the Strategy Execution tool in order to effectively communicate and monitor the achievement of the stated strategic objectives.